

# RONIS

Locks for electrical application

## INTERLOCK SYSTEMS

For HV/MV equipment  
Switchgear-Breakers-Transformers



- *Body 100% metal*
- *High Security*
- *Indoor and Outdoor application*





## About us

Created in 2004, **SECUMS Interlocks** is the only specialist in Key Operated Interlocks and Safety Gate Switch Interlocks who offers “all out of one hand” interlock solutions for a wide scope of industrial safeguarding applications. Our company, based in Neuilly-Plaisance France studies, develops and designs interlock systems for machine guarding, power generation and –distribution systems up to interlocks for valves in the oil & gas Industry.

Attentive to the needs of our customers, and thanks to our product development cycle, we offer you an ever wider range of products.

This catalogue provides information on our RONIS interlock systems for Electrical Switchgear and HV/MV Equipment , which offers a wide selection of locks divided into five product groups:

- **Bolt locks**
- **Access locks**
- **Key exchange units**
- **Solenoid controlled switchlocks**
- **Cam Locks and Key Switches**

*The Ronis range supplied by SECUMS Interlocks complies with the highest ingress protection standard of IP 67, and manufactured completely in stainless steel ideal for use in even the harshest environments.*

The RONIS series is designed to guarantee that operating actions and events are undertaken in a pre-determined sequence ensuring a safe working environment.

It implements tailored interlocks which force all operators to comply with a logical predetermined operating procedure through a system of key transfer.

Entirely in stainless steel, the locks are designed around a strong steel case, and suitable for use under the harshest environmental conditions.

Our product offering includes the design of innovative on demand products at the best price to quality ratio. We permanently listen to our clients to offer the solution that best fits their needs.

In recognition of our know-how and of the quality of our products, we have been certified ISO9001/2008

## Our Commitment :

*Client satisfaction is our top level priority.*

*All the company's activity tend towards your satisfaction, as to provide you with innovative, reliable and available packages in the field of safety in heavy Duty facilities.*

*We work in strict compliance with ecologic constraints by offering you products that can be 100% recycled and reused.*

*As to ensure long term development of the company, SECUMS Interlocks relies only on private investors who share our view of long term growth.*

# Summary



<b>Company profile</b> .....	2
<b>Ronis Product Group Characteristics</b> .....	4
<b>Key Coding and Marking</b> .....	4
<b>Bolt Locks</b> .....	5
<b>EL11AP</b> – Lock with 1 bolt and 1 key.....	5
<b>EL12AP/EL12BP</b> - Lock with 1 bolt and 2 keys .....	6
<b>EL12CP/ EL12GP</b> - Lock with 1 bolt and 2 keys.....	7
<b>EL13AP/ EL13BP/ EL13EP</b> - Lock with 1 bolt and 3 keys.....	8
<b>EL22AP/ EL22BP</b> - Lock with 2 bolts and 2 keys.....	9
<b>Bolt locks with limit switch</b> .....	10
<b>EL11AP-MCU/ EL11BP-MCU</b> - Lock, 1 bolt and 1 key with limit switch.....	10
<b>EL12AP-MCU/ EL12BP-MCU</b> - Lock, 1bolt and 2 keys with limit switch.....	11
<b>Access Locks</b> .....	12
<b>ELP1</b> – Access lock with 1 key.....	12
<b>ELP101-102</b> – Compact access lock with 1 key.....	13
<b>ELP105-106</b> – 3 Point access lock with 1 key.....	14
<b>ELP1 MCU</b> – Access lock with 1 key and limit switch.....	15
<b>ELP2/ ELP2SP</b> – Access lock with 2 keys.....	16
<b>ELP3/ ELP3SP</b> – Access lock with 3 keys.....	17
<b>Key Exchange Unit</b> .....	18
<b>ELC</b> - Key Exchange Unit (to trap certain keys in order to release others).....	18
<b>Cam Locks</b> .....	19
<b>1104</b> – Camlock 30 mm. diam. cylinder.....	19
<b>1351</b> – Camlock 23 mm. diam. cylinder.....	20
<b>1049</b> – Camlock with 5mm operating pin.....	21
<b>1083 B2</b> – Camlock with micro switch.....	22
<b>RS-101F-BOB</b> – Key switch-Rotating.....	23
<b>Solenoid Controlled Switch Locks</b> .....	24
<b>EMC</b> – Solenoid controlled switch lock.....	24
<b>EMC-IP55M</b> – Solenoid controlled switch Lock in IP55 enclosure.....	25
<b>Padlocks</b> .....	26
<b>CAD-RON</b> –Padlocks Brass.....	26
<b>SECULOK Range</b> .....	27
<b>Contact</b> .....	28



## - Product group Characteristics

### EL Bolt Interlock

The EL Bolt Interlock is designed for locking off electrical switchgear isolators and earthing devices. The standard unit is supplied with a 10mm diameter bolt which is 6mm in length when the key is trapped and 18mm when the key is released. The bolt movement is directly controlled by the rotation of the key.

### ELP Door Interlock

The ELP door interlock is suitable for use on all types of hinged doors on panels, cabinets and transformers. The Ronis key can be removed only when the door is closed and the striker plate is locked in position.

### ELC Exchange Box

The ELC Exchange Box is designed to enable the release of extra keys by inserting an initial key. This may be required when access to multiple ELP door interlocks is needed.

### EMC Solenoid controlled Switchlocks

An energised solenoid enables key release after rundown time or operating cycle completion and prevents unauthorized restart. This unit is generally used in conjunction with the ELP series of Access interlocks

### Camlocks

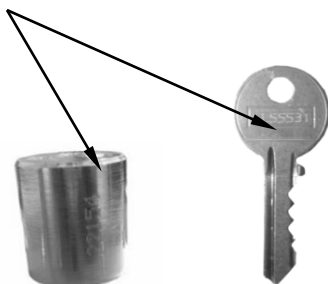
The cam locks are designed to release their keys only when the electrical switchgear is in the desired position, either locked ON or locked OFF. Whilst the key is released the desired position cannot be altered. Camlocks are normally used on circuit breakers. They can also be used for switches and earthing switches on most medium-voltage switchgear.

### Limit Switch Module add on IP67

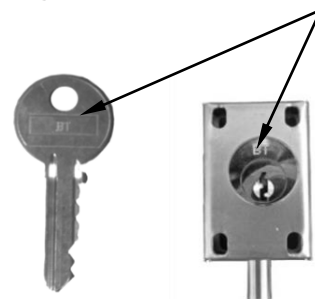
Limitswitch modules are available for control and monitoring to add on EL and ELP interlocks. Ronis limitswitch modules supplied by SECUMS Interlocks comply with the highest ingress protection standard of IP 67, and designed around a strong steel case ideal for use in even the harshest environments.

## - Key coding and marking

**Marking of the key codes**



**Marking of the clients marks**



# Bolt lock

## 1 bolt & 1 key



### Lock with 1 bolt & 1 key

#### Characteristics:

- Case and bolt in stainless steel
- Bolt diameter: 10mm
- Bolt stroke : 12 mm
- Rear bolt shape: square 10mm
- Nickel-plated and chrome finished cylinder
- Metal key

#### Operating Principle:

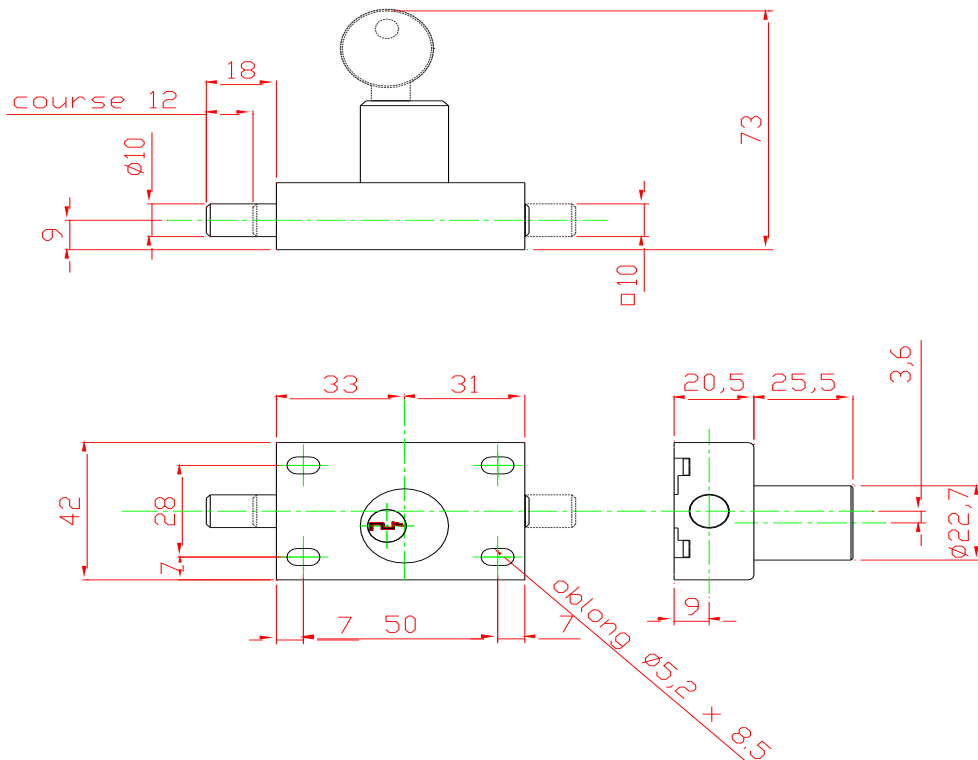
**Bolt position shot:** L= 18mm – Key released

**Bolt position withdrawn:** L= 6mm – Key trapped

#### Options:

Length bolt position shot L=35mm

ref:EL11AP35





### Lock with 1 bolt (right side) & 2 keys

#### Characteristics:

- Case and bolt in stainless steel
- Bolt diameter: 10mm
- Bolt stroke : 12 mm
- Rear bolt shape : square 10mm
- Nickel-plated and chrome finished cylinder
- Metal key

#### Operating Principle:

##### EL12AP

**Bolt position shot:** L=18mm – Key 1 released and key 2 trapped ( boltposition)

**Bolt position withdrawn:** L=6mm - Key 1 trapped and key 2 released

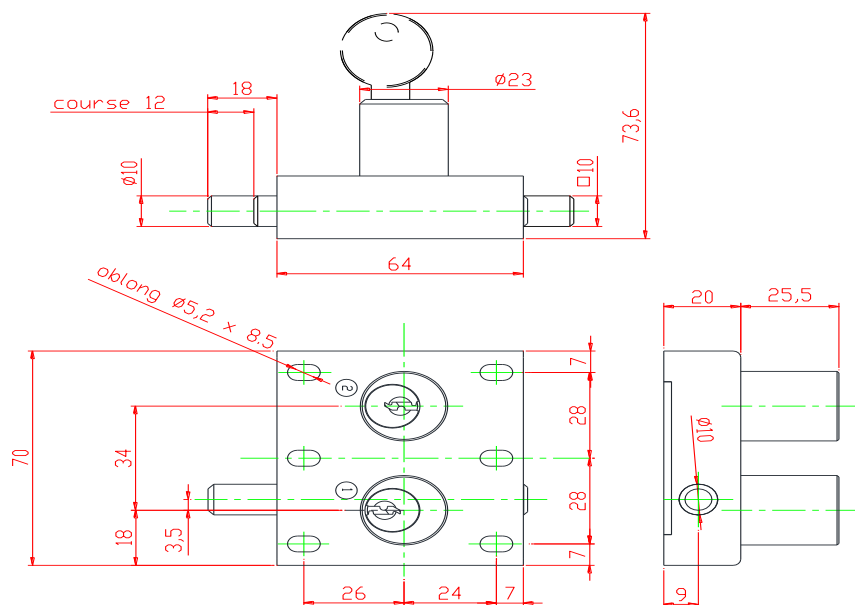
##### EL12BP

**Bolt position shot:** L=18mm – Keys 1 and 2 released

**Bolt position withdrawn** L=6mm – Keys 1 and 2 trapped

#### Options

Length bolt position shot L=35 mm ref: EL12AP35/ EL12BP35





## Lock with 1 bolt (left side) and 2 keys

### Characteristics:

- Case and bolt in stainless steel
- Bolt diameter: 10mm
- Bolt stroke : 12 mm
- Rear bolt shape : square 10mm
- Nickel-plated and chrome finished cylinder
- Metal key

### Operating Principle:

#### EL12CP

**Bolt position shot:** L = 18mm - 2 released keys

**Bolt position withdrawn:** L = 6mm - 2 captive keys

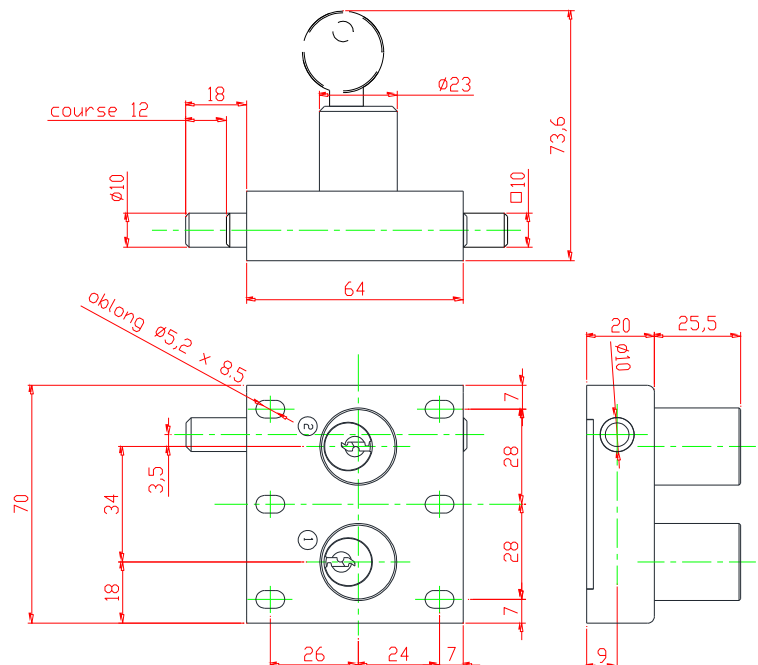
#### EL12GP

**Bolt position shot:** L = 18mm – Key 1 trapped and key 2 released (bolt position)

**Bolt position withdrawn:** L = 6 mm – Key 1 released and key 2 trapped

### Options:

Length bolt position shot : L = 35 mm ref : EL12CP35/ EL12GP35





### Lock with 1 bolt & 3 keys

#### Characteristics:

- Case and bolt in stainless steel
- Bolt diameter: 10mm
- Bolt stroke : 12 mm
- Rear bolt shape : square 10mm
- Nickel-plated and chrome finished cylinder
- Metal key

#### Operating Principle:

##### EL13AP

**Bolt position shot:** L=18mm - key 1 released, keys 2 et 3 trapped  
 Insert Key 1, rotate 180°, **Bolt position in:** L=6mm - Key 1 trapped.  
 Turn Key 2 180°, key 2 released.  
 Turn Key 3 180°, key 3 released.

##### EL13BP

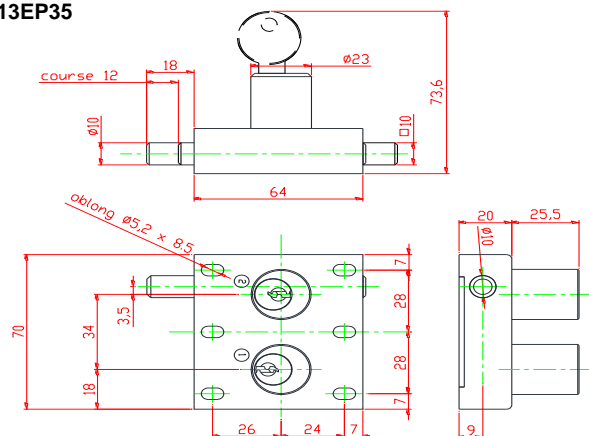
**Bolt position shot:** L=18mm - key 1 trapped and keys 2 et 3 released.  
 Insert key 3, turn 180°,  
 Insert key 2, turn 180°,  
 Rotate key 1 180°. **Bolt position withdrawn:** L=6mm - key 1 released. Keys 2 et 3 trapped.

##### EL13EP

**Bolt position shot:** L=18mm - Keys 1, 2 and 3 released.  
**Bolt position withdrawn:** L=6mm. - Keys 1, 2 et 3 trapped.

#### Options:

Length bolt shot L=35 mm ref: EL13AP35/ EL13BP35/ EL13EP35







## Lock with 2 bolts & 2 keys

### Characteristics:

- Case and bolt in stainless steel
- Bolt diameter: 10mm
- Bolt stroke : 12 mm
- Rear bolt shape : square 10mm
- Nickel-plated and chrome finished cylinder
- Metal key

### Operating Principle:

#### EL22AP

**Bolt 1 position shot:** L=18mm - Key 1 released.

**Bolt 2 position withdrawn:** L=6mm - Key 2 trapped.

Insert key 1 and turn 180°, **Bolt 1 position withdrawn:** L=6mm – Key 1 trapped

Turn key 2 180°, **Bolt 2 position shot:** L=18mm – Key 2 released

#### EL22BP

**Bolt 1 position shot :** L=18mm – Key 1 released.

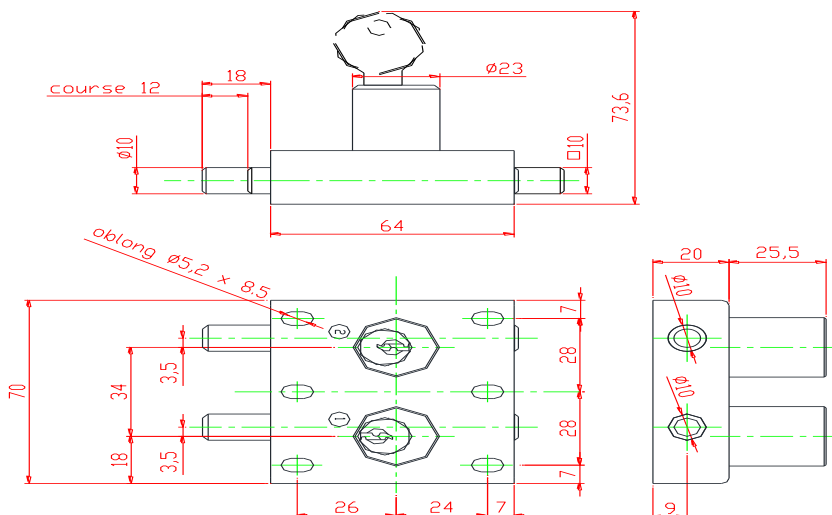
**Bolt 2 position withdrawn :** L=6mm – Key 2 trapped.

Insert Key 1 and turn 180°, **Bolt 1 position in:** L=6mm – Key 1 trapped

Turn key 2 180°, **Bolt 2 position out :** L=18mm – key 2 released

### Options:

Length bolt shot L=35 mm ref:EL22AP35/ EL22BP35





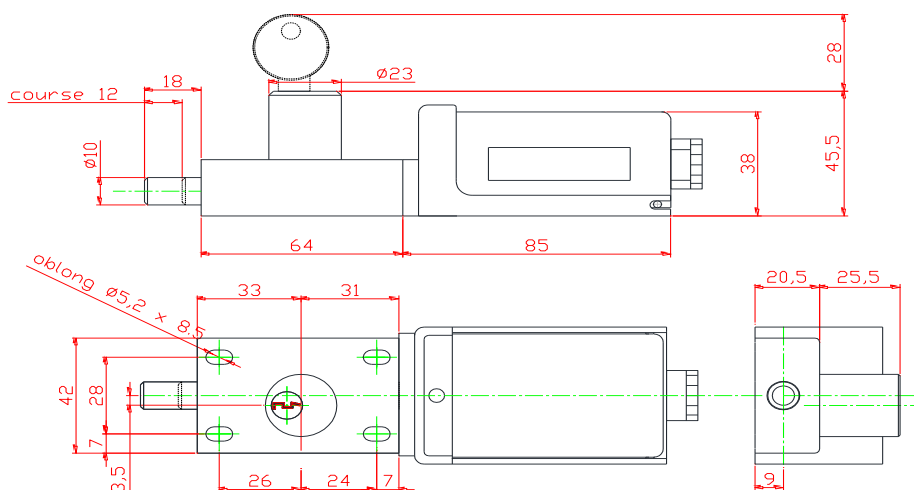
## Lock 1 bolt - 1 key with limit switch

### Characteristics:

- Case and bolt in stainless steel
- Bolt diameter: 10mm
- Bolt stroke: 12 mm
- Rear bolt shape : square 10mm
- Nickel-plated and chrome finished cylinder
- Metal key

### Electrical features:

- AC-15: 400V/4A; 230V/6A; 115V/6A
- DC-13: 220V/3A; 110V/0,8A; 24V/3A
- Ingress Protection : IP67
- Switch 1NO+1NC ref: **MCUOF**
- Switch 2NO key released ref :**MCU2O**
- Switch 2NO+1NC key released ref : **MCU2OF**



### Operating Principle:

The rear bolt operates the limit switch.

#### **EL11AP-MCU**

**Bolt position out:** L=18mm – Key released.

**Bolt position in:** L= 6mm – Key trapped.

#### **EL11BP-MCU**

**Bolt position out:** L=18mm – Key trapped.

**Bolt position in:** L= 6mm – Key released.

### Options:

Contact 2NO– Key 1 released ref:**EL11AP-MCU2O/ EL11BP-MCU2O**

Bolt length: L:35 mm ref:**EL11AP35 –MCU /EL11BP35-MCU**



## Lock 1 bolt-2 keys with limit switch

### Characteristics:

- Case and bolt in stainless steel
- Bolt diameter: 10mm
- Bolt stroke: 12 mm
- Rear bolt shape : square 10mm
- Nickel-plated and chrome finished cylinder
- Metal key

### Electrical features:

- AC-15: 400V/4A; 230V/6A; 115V/6A
- DC-13: 220V/3A; 110V/0,8A; 24V/3A
- Ingress Protection : IP67
- Switch 1NO+1NC ref: **MCUOF**,
- Switch 2NO key released ref : **MCU20**
- Switch 2NO+1NC key released ref : **MCU20F**

### Operating Principle:

The rear bolt operates the limit switch.

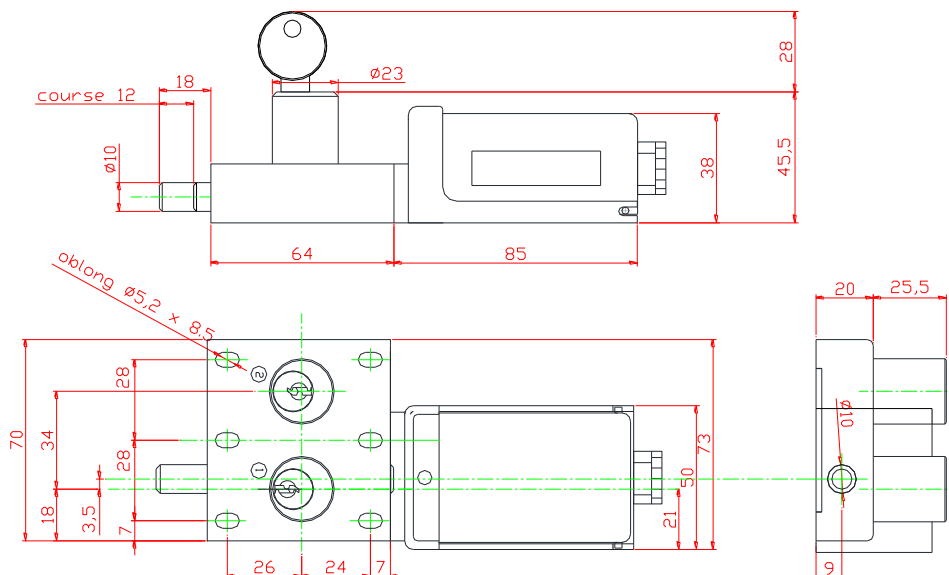
**Bolt position shot:** L=18mm – Key released.

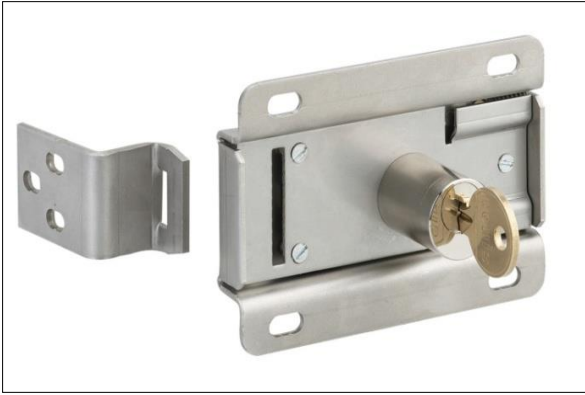
**Bolt position withdrawn:** L= 6mm – Key trapped.

### Options:

Contact 2NO – Key 1 released ref: **EL12AP-MCU20**

Length bolt = 35 mm ref: **EL12AP35-MCU**





## Doorlock 1 Key

### Characteristics:

- Case and bolt in stainless steel
- Nickel-plated and chrome finished cylinder
- Metal key

### Electrical features:

- AC-15: 400V/4A; 230V/6A; 115V/6A
- DC-13: 220V/3A; 110V/0,8A; 24V/3A
- Ingress Protection : IP67
- Switch 1NO+1NC ref: **MCUOF**,
- Switch 2NO key released ref : **MCU2O**
- Switch 2NO+1NC key released ref : **MCU2OF**

### Operating Principle:

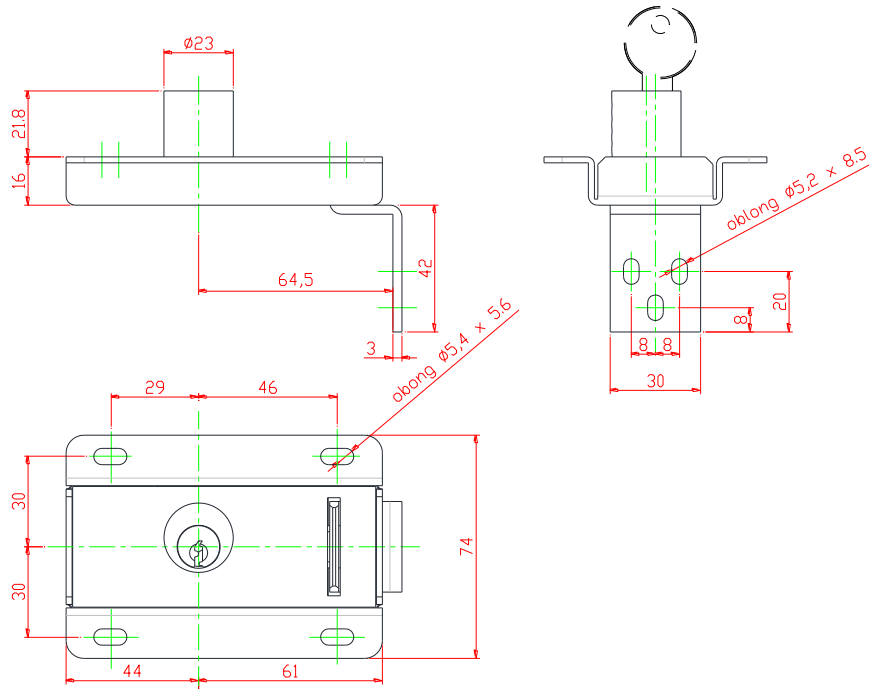
The key can be withdrawn when the striker plate is engaged in the lock.

**Closed door :** key released.

**Opened door:** Key trapped.

### Options:

- Special striker plates.
- Key not provided (on request).





## Compact Access Lock with 1 Key

### Characteristics:

- Case and Latch in stainless steel
- Nickel-plated and chrome finished cylinder
- Metal Key

### Option electrical contact –detection Latch locked

- AC-15: 400V/4A; 230V/6A; 115V/6A
- DC-13: 220V/3A; 110V/0,8A; 24V/3A

Ingress Protection : IP67

Cable length 1 meter- other length on demand

Switchover contact OC – 1 m cabel Ref: **OF1M**

Switch contact 1NO+1NC-cable 1m Ref: **O+F1M**

Switch contact 2NC- cable 1m Ref: **F+F1M**

### Operating Principle:

The key cannot be removed when the latch is engaged in the lock.

**Access closed:** key free

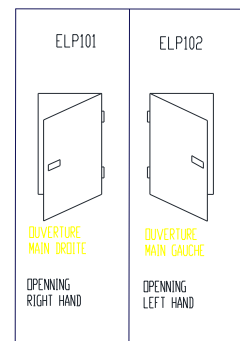
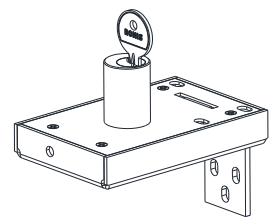
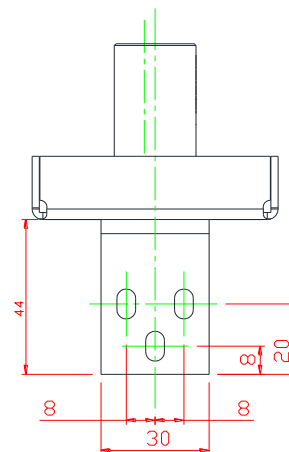
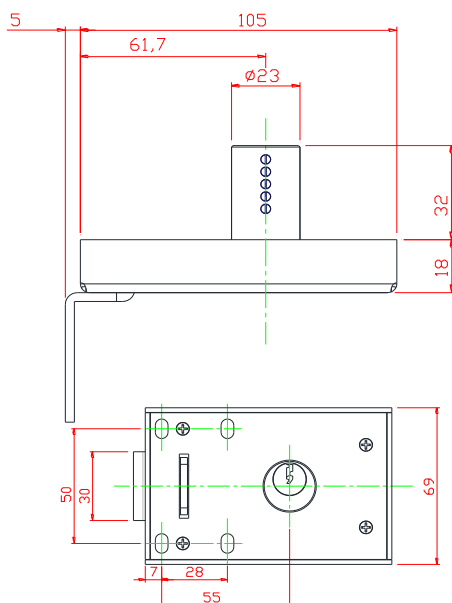
**Access open:** key trapped

### Option:

Special Latch

Shaft diameter 5mm ref : **ELP1AX**

Supplied without Key (on request)



# 3 point access lock with 1 key



## 3 Point Access Lock with 1 Key

### Characteristics :

- Stainless steel case and striker
- Nickel and chrome plated cylinder
- Metal key
- Lock 3 points (special enclosed IP67)
- Crank operation integrated in cylinder

### Option electrical contact –detection Latch locked

- AC-15: 400V/4A; 230V/6A; 115V/6A
- DC-13: 220V/3A; 110V/0,8A; 24V/3A
- Ingress Protection : IP67
- Cable length 1 meter- other length on demand
- Switchover contact OC – 1 m cable Ref: **OF1M**
- Switch contact 1NO+1NC-cable 1m Ref: **O+F1M**
- Switch contact 2NC- cable 1m Ref: **F+F1M**

The key cannot be removed when the latch is engaged in the lock.

**Access closed:** key free

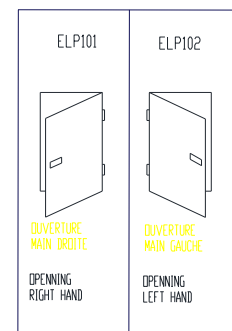
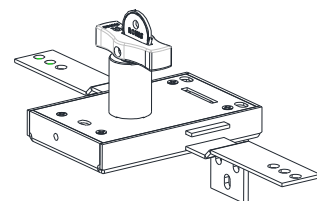
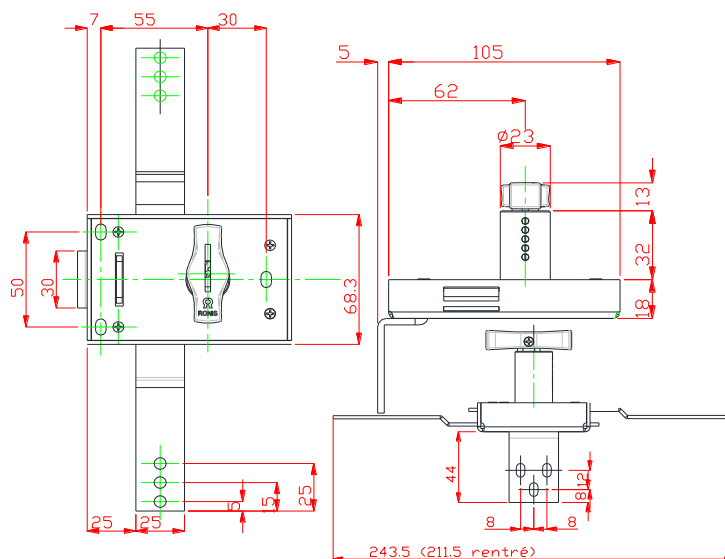
**Access open:** key trapped

### Option:

Special Latch

Shaft diameter 5mm ref : **ELP1AX**

Supplied without Key (on request)





## Access lock with 1 Key and Limit Switch

### Characteristics:

- Case and striker in stainless steel
- Nickel-plated and chrome finished cylinder
- Metal Key
- Monitoring locked striker position

### Electrical features:

- Contact 1NO+1NC ref: **MCUOF**,
- Contact 2NO key free ref: **MCU20**
  - Contact 2NO+1NC key free ref: **MCU20F**
  - Ingress Protection: IP67
  - AC-15: 400V/4A; 230V/6A; 115V/6A
  - DC-13: 220V/3A; 110V/0,8A; 24V/3A

### Operating Principle:

The key cannot be removed when the latch is engaged in the lock.

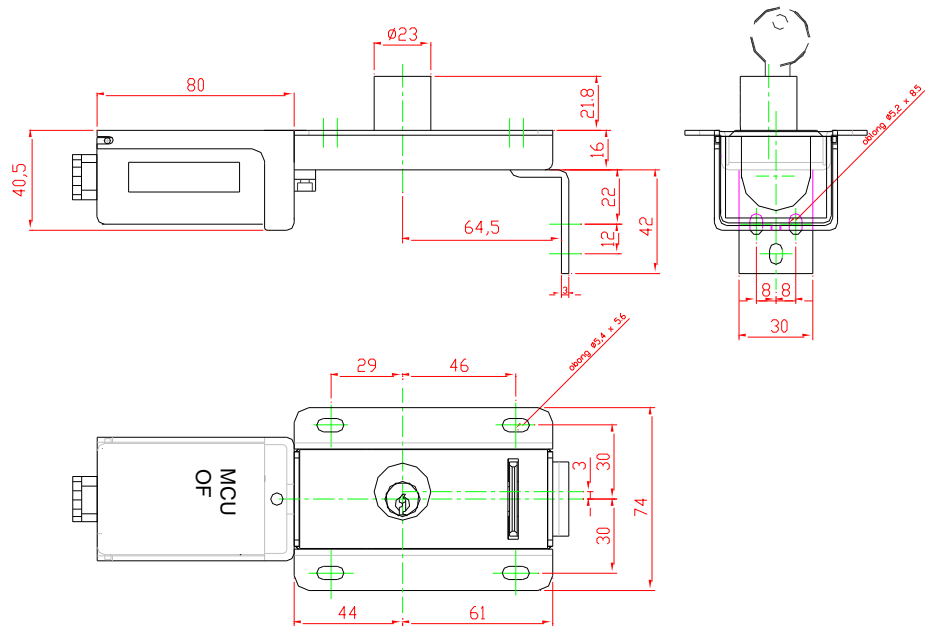
**Access closed:** key free

**Access open:** key trapped

### Option:

Special Latch

Supplied without Key (on request)





**Operating Principle:**

**ELP2**

**Closed door:** striker plate engaged – Keys 1 and 2 released.

**Opened door:** Keys 1 et 2 trapped.

**ELP2SP**

**Closed door:** striker plate engaged - Key 1 released and key 2 trapped.

**Opened door:** Key 1 trapped and key 2 released.

**Option:**

Special striker plates.

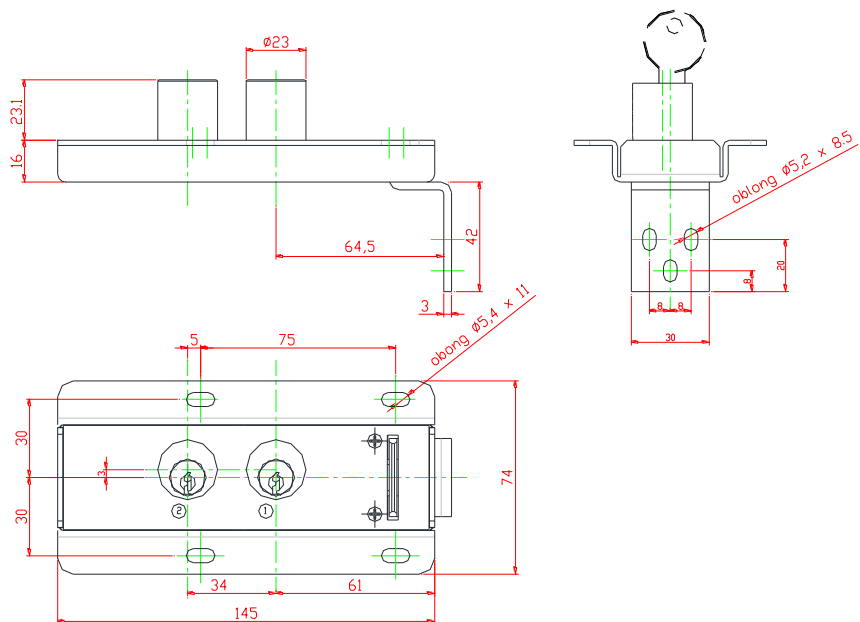
## Access lock 2 Keys

**Characteristics:**

- Case and bolt in stainless steel
- Nickel-plated and chrome finished cylinder
- Metal key

**Electrical features:**

- AC-15: 400V/4A; 230V/6A; 115V/6A
- DC-13: 220V/3A; 110V/0,8A; 24V/3A
- Ingress Protection : IP67
- Switch 1NO+1NC ref: **MCUOF**,
- Switch 2NO key released ref : **MCU2O**
- Switch 2NO+1NC key released ref : **MCU2OF**







## Doorlock with 3 Keys

### Characteristics:

- Case and bolt in stainless steel
- Nickel-plated and chrome finished cylinder
- Metal key

### -Electrical features:

- AC-15: 400V/4A; 230V/6A; 115V/6A
- DC-13: 220V/3A; 110V/0,8A; 24V/3A
- Ingress Protection : IP67
- Switch 1NO+1NC ref: **MCUOF**,
- Switch 2NO key released ref : **MCU20**
- Switch 2NO+1NC key released ref : **MCU20F**

### Operating Principle:

#### ELP3

**Closed door:** striker engaged - Keys 1, 2 and 3 released.

**Opened door:** Keys 1, 2 and 3 trapped.

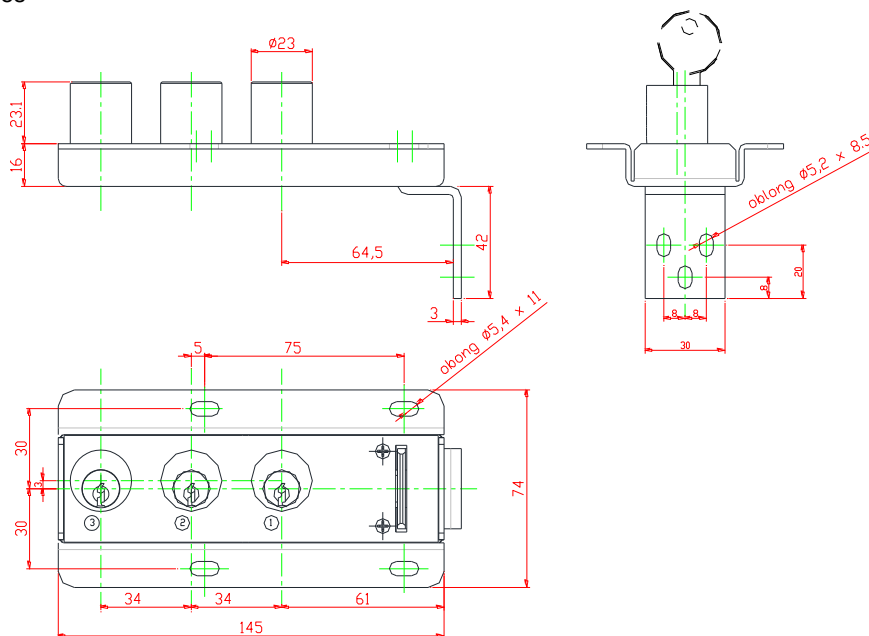
#### ELP3SP

**Closed door:** striker engaged - Key 1 trapped , Keys 2 and 3 released.

**Opened door:** Key 1 released, Keys 2 and 3 trapped. The Keys 2 and 3 can be removed only when the striker plate is engaged.

### Option:

Special striker plates





## Key exchange unit

DESIGNATION	NB OF LOCKS	OBSERVATION
ELC11	2	1 released key / 1 captive key
ELC12	3	1 released key / 2 captive keys
ELC13	4	1 released key / 3 captive keys
ELC22	4	2 released keys / 2 captive keys
ELC14	5	1 released key / 4 captive keys
ELC23	5	2 released keys / 3 captive keys
ELC15	6	1 released key / 5 captive keys
ELC24	6	2 released keys / 4 captive keys
ELC33	6	3 released keys / 3 captive keys
ELC16	7	1 released key / 6 captive keys
ELC25	7	2 released keys / 5 captive keys
ELC34	7	3 released keys / 4 captive keys
ELC17	8	1 released key / 7 captive keys

### Characteristics:

- Box and lockingbolts in stainless steel
- Nickel-plated and chrome finished cylinder
- Metal key

### Operating Principle:

The prime lock is defined by the number of released keys and captive keys in the initial state.

For the ELC12 Interlock as an example:

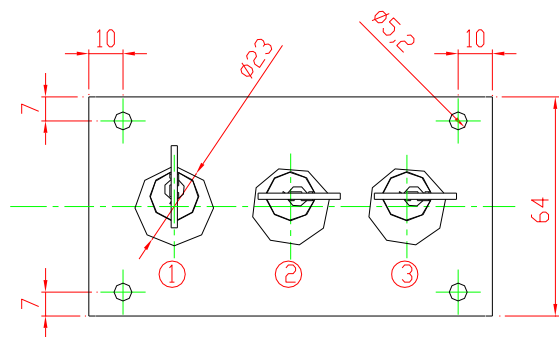
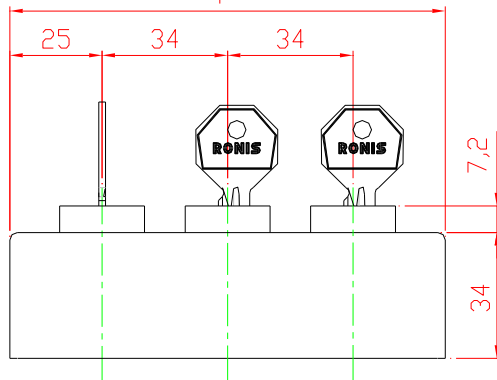
Insert and turn key 1 which becomes trapped. Turn and release key 2 and then turn and release key 3.

**Initial state:** key 1 is released , keys 2 and 3 are trapped.

Insert and turn key 1, key becomes trapped. Then, turn and release key 2 and then, turn and release key 3.

**Final State:** key 1 is trapped, keys 2 and 3 are released.

L+34mm / clé à partir de 4 clés





### Camlock

#### Characteristics:

- Nickel-plated and chrome finished cylinder
- Metal key

#### Operating Principle:

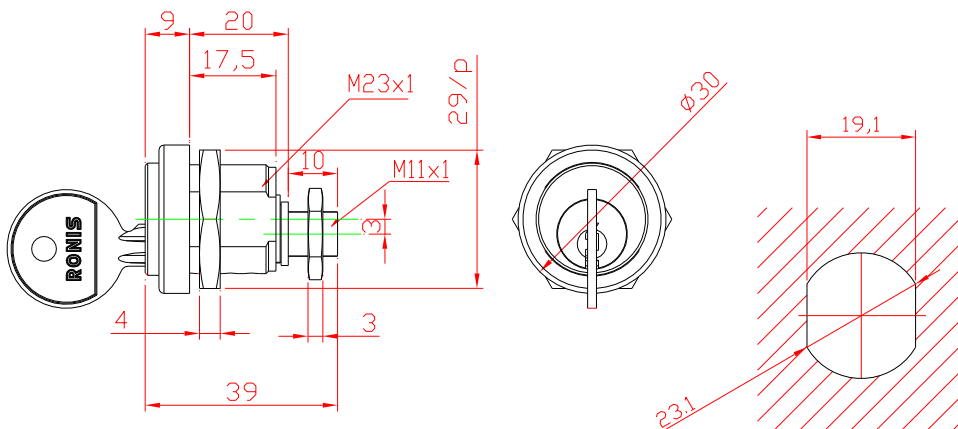
- Rotating the Key = rotation of the cam :1/4 turn right or left
- Fixation to the panel with nut (panel thickness 0.8 to 10mm)
- A wide range of cams can be adapted to this cylinder lock.

#### Possibilities:

- Right opening position ref: **1104B**
- Left opening position ref: **1104A**

#### Options:

- 1/2 turn rotation
- Square adaptor 15 mm ref: **1104.30**



# 1351

## Camlock 23 mm diam. cylinder



### Camlock

#### Characteristics:

- Nickel-plated and chrome finished cylinder
- Metal key

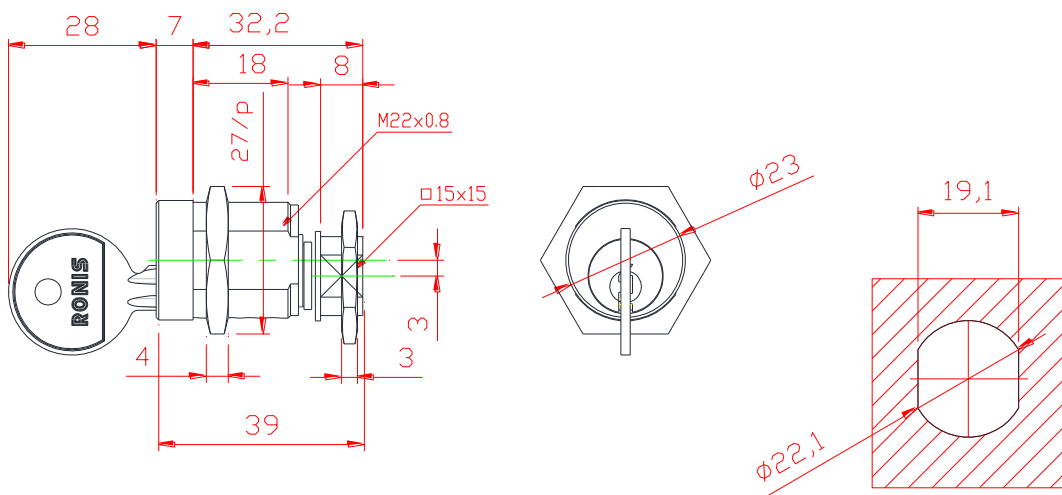
#### Operating Principle:

- Rotation key = movement of the cam: 1/4 turn right or left.
- Fixation to the panel with nut (panel thickness 0.8 to 10mm)
- A wide range of cams can be adapted to this cylinder lock.

#### Options:

Key rotation

- Clockwise rotation ref: 1351B
- Counterclockwise rotation ref: 1351A



Distribution and copying prohibited without written authorization from SECUMS Interlocks

For further informations: <http://www.secums-interlocks.com> - Tel.: 00 33 (0)1 43 08 65 31 Fax: 00 33 (0)1 43 08 97 20

# Camlock

with 5mm operating pin



## Camlock

### Characteristics:

- Nickel-plated and chrome finished cylinder
- Metal key
- Cam with operating pin diam. 5mm

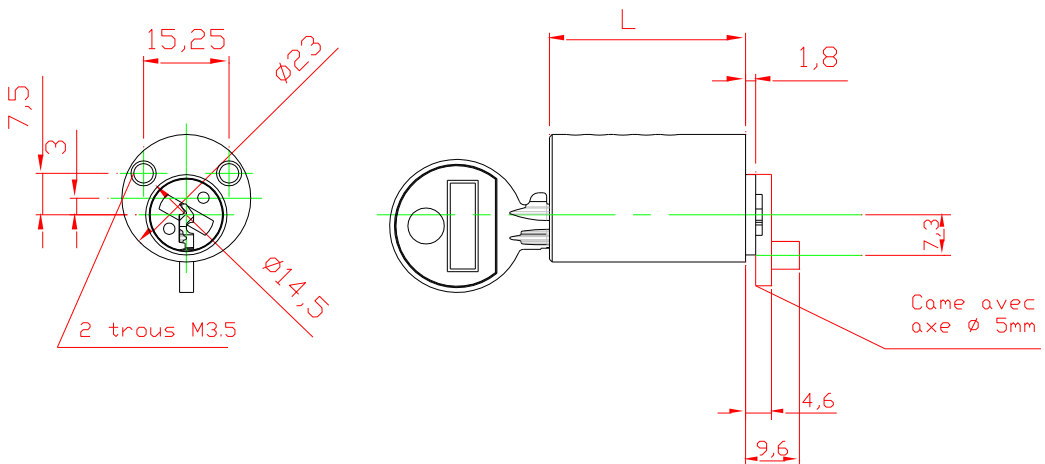
### Operating Principle:

- Rotating key = movement of the cam: 1/2 turn right or left.
- Fixation to the panel with a screw M3.5
- A wide range of cams can be adapted to this cylinder lock.

### Options:

Key rotation

- Clockwise rotation ref: **1049B**
- Counterclockwise rotation ref: **1049A**
- 1/4 turn rotation ref: **1049-35-4**
- Length cylinder L=25 ref:**1049-25** L=28 ref:**1049-28**, L=35 ref: **1049-35**





## Camlock with changeover switch

### Characteristics:

- Nickel-plated and chrome finished cylinder
- Key Metal
- Galvanized steel contact support

### Electrical characteristics:

- Crouzet changeover switch 83161.118 Faston terminals :  
*Nominal: 5 A*  
*Thermal : 17,5 A*
- Trapped key contact ref: **1083B2**
- Released key contact ref: **1083A2**

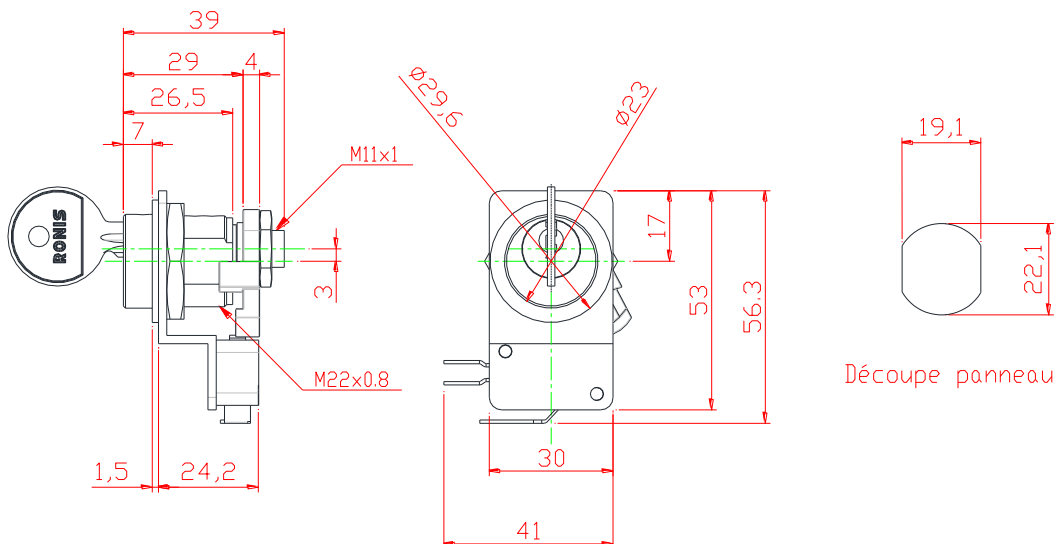
### Operating Principle:

- Rotation key = movement of the cam: 1/4 turn right or left operation of the switch
- Fixation to the panel with nut (panel thickness 1 to 2 mm)

### Options:

Establishment of multiple swith functionality by adding extra change over switch:

- 1 change over swith ref: **1083B216**
- 2 change over switches ref: **1083B218**





## Key switch rotating

### Characteristics:

- Nickel-plated and chrome finished cylinder
- Key Metal
- Support Stainless Steel 304
- BOB Mounting
- Contacts:1NO+1NC key free ref: **101F**
- Contacts:2NO2NC key free ref: **202F**
- Contacts:3NO1NC key free ref: **301F**
- Contacts:4NO key free ref: **40**

### Electrical features:

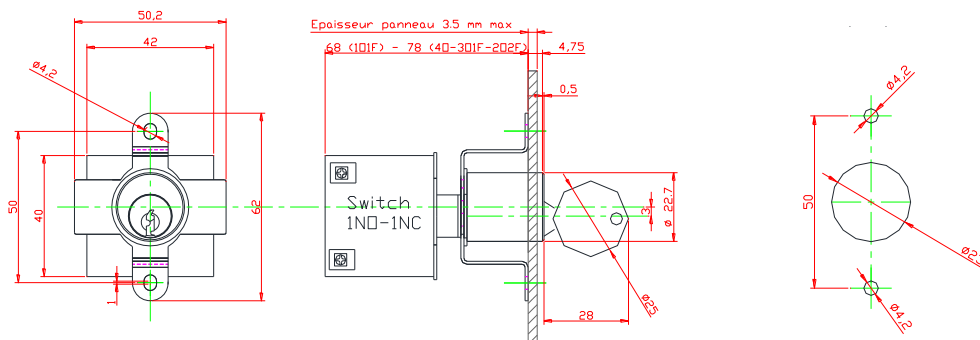
AC20:20A, AC21:16A, AC15(230v):6A  
Max Power use:  
3x230V : 4kW, 3x400V : 7.5kW,

### Operating Principle:

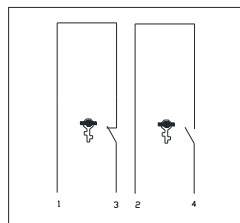
Key rotation ¼ Turn – direct / positive drive switch operation

Fixation sur support par écrou, prévue pour épaisseur de support de 1 à 2mm.

BOB panelmounting with fixing nut, panel thickness 1-2mm max.



SCHEMA DE CABLAGE  
(Clé prisonnière)





## Solenoid controlled switch lock panel mounted

### Characteristics:

- 1 to 3 locks (keys), multi-key ref: **2E, 3E**
- 2NO+2NC contacts + 2 solenoid position control contacts (positive breaking safety contacts)
- 100% Solenoid Duty Cycle, LED, PushButton, override key
- Nickel-plated and chrome finished cylinder
- Key Metal

### Electrical characteristics:

- 24 Volts DC/AC 13W power supply
- 2NC Switch AC21 12A

### Option:

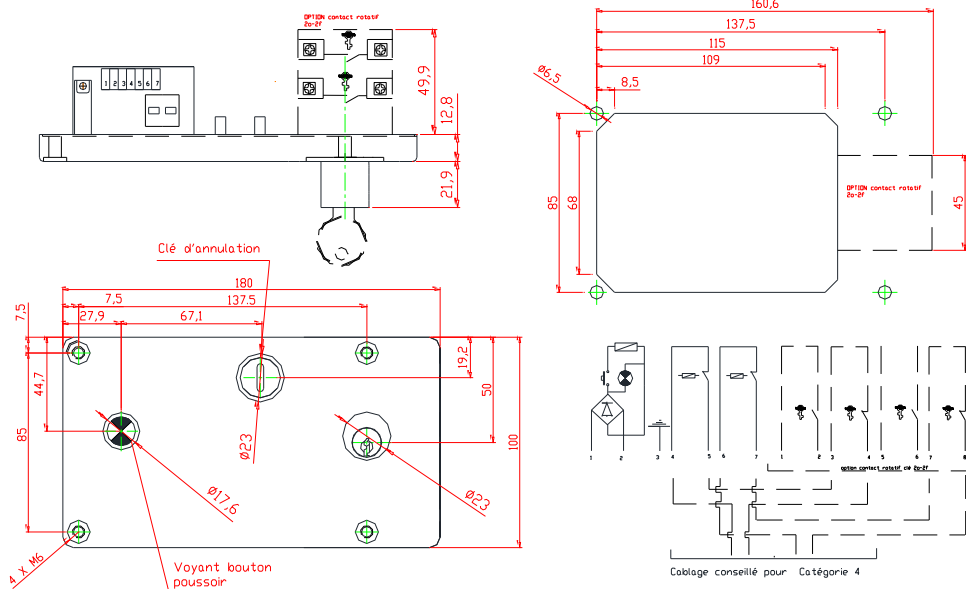
- Stainless steel enclosure IP55 see ref: **EMC-IP55**

### Operating Principle:

Solenoid controlled single-key or multi-key switch interlock. Suitable for use in high-risk, category 4 applications

### Options:

- 2O2F contact – key trapped (7.5kW sous 400V, 4kW sous 230V) ref: **EMC-2NO+2NC**
- 230 Volts AC ref: **EMC-230VCA**
- 110 Volts AC ref: **EMC-110VCA**
- 125 Volts AC ref: **EMC-125 VCC**





**EMC  
IP55M**

# Solenoid controlled switch lock with IP55M enclosure



## Solenoid controlled switch lock with IP55M enclosure

### Characteristics:

- in IP55 enclosure
- 1 to 3 locks (keys), multi-key ref: **2E, 3E**
- 2NO+2NC contacts + 2 solenoid position control contacts (positive breaking safety contacts)
- 100% Solenoid Duty Cycle, LED, Push Button, override key
- Nickel-plated and chrome finished cylinder
- Key Metal
- Stainless Steel 316 IP55 enclosure

### Electrical characteristics:

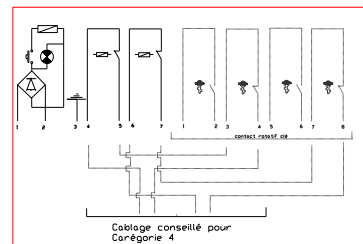
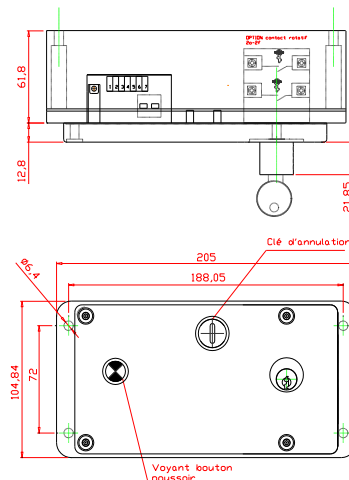
- 24 Volts DC/AC 13W power supply
- 2NC switch AC21 12A

### Principe:

Energised solenoid enables key release after rundown time or operating cycle completion and prevents unauthorized restart..

### Options:

- 2NO+2NC switch – key trapped (7.5kW sous 400V, 4kW sous 230V) ref: **EMC-2NO+2NC**
- 230 Volts AC ref: **EMC-IP55-230VCA**
- 110 Volts AC ref: **EMC-IP55-110VCA**
- 125 Volts DC ref: **EMC-IP55-125 VCC**



Distribution and copying prohibited without written authorization from SECUMS Interlocks

For further informations: <http://www.secums-interlocks.com> - Tel.: 00 33 (0)1 43 08 65 31 Fax: 00 33 (0)1 43 08 97 20

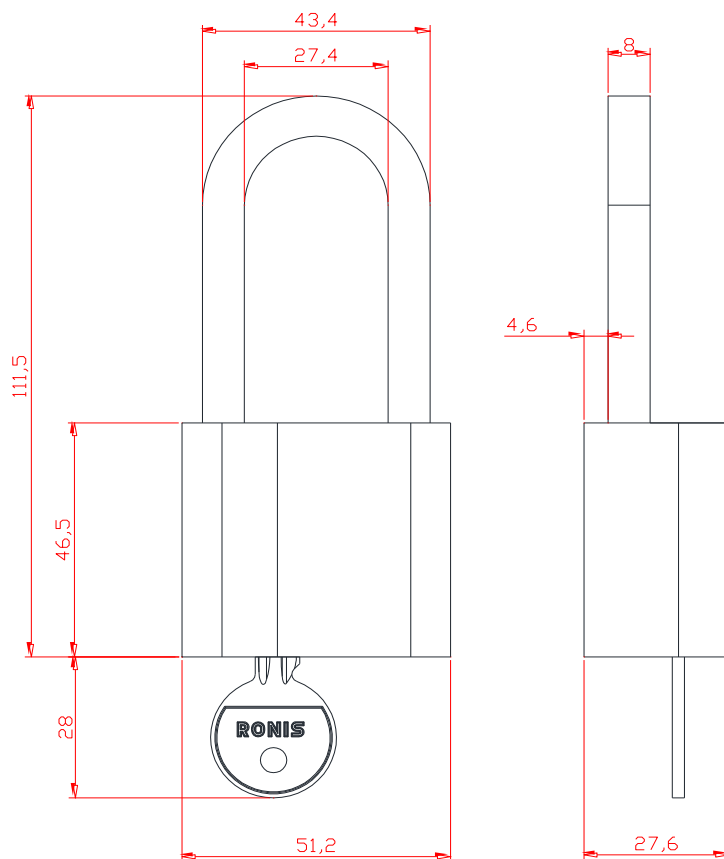


## Padlocks for European ½ Cylinders

### Characteristics

Solid brass body

- Hardened Steel shackle – Double locking
- Replaceable cylinder
- Quick installation
- Brass Key
- Shackle diameter 8 mm -high 56mm
- Body 47 x 50 x 27 mm



## Seculok range



Bolt lock - BLT



Access lock - ACS



Rotary lock - SWL

## Seculok IVL range

**VPH – Lock for  
pneumatic and  
hydraulic control  
valves**



**90L - Lock for lever  
operated valves**



**MTL - Lock for  
handwheel  
operated valves**



## Distributors

### **TOTAL LOCKOUT (SAFETY) LTD**

Unit 10 Warner Drive, Springwood Industrial Estate  
Braintree, Essex, CM7 2YW  
UNITED KINGDOM  
Tel: +44 (0)1376 325506  
Fax: +44 (0)1376 347484  
[www.totallockout.com](http://www.totallockout.com)  
[sales@totallockout.com](mailto:sales@totallockout.com)

### **HEXAGON DISTRIBUTORS SDN BHD**

Lot 1903A, Jalan KPB 7  
Kawasan Perindustrian Kg. Baru Balakong  
43300 Seri Kembangan  
SELANGOR, MALAYSIA  
Tel: +60-3-8961 8066  
Fax: +60-3-8962 1011  
[www.valvetec.com](http://www.valvetec.com)  
[skcho@mjvttec.co.krc](mailto:skcho@mjvttec.co.krc)

### **MJV TEC- Myoung Jin Valvetec CO., Ltd**

6F, Sungwoo Building  
15-12 Yoido – Dong  
Youngdeungpo - Gu  
SEOUL, KOREA  
Tel: +82 8 785 2327  
Fax: +82 8 785 2329  
[www.valvetec.com](http://www.valvetec.com)  
[skcho@mjvttec.co.krc](mailto:skcho@mjvttec.co.krc)

### **AL-ZAHM INT'L GROUP TRADG.**

Oil field & Industrial services,  
P.O. Box: 26212, Safat -13123, Kuwait  
[ambialex@hotmail.com](mailto:ambialex@hotmail.com)

## Head office

### Sécurité Machines Systèmes

#### **SECUMS Interlocks SARL**

9, rue Eugène Sue  
93360 Neuilly Plaisance  
FRANCE  
Tel : + 33 1 43 08 65 31  
Fax: + 33 1 43 08 97 20  
[www.secums-interlocks.com](http://www.secums-interlocks.com)  
[info@secums.com](mailto:info@secums.com)

### Sales Office Europe- North

#### **Secums Interlocks BV**

Pascalweg 25  
3225 LE Hellevoetsluis  
NETHERLANDS  
Tel : 31 (0) 181 809970  
Fax: 31 (0) 181 809975  
[www.secums-interlocks.com](http://www.secums-interlocks.com)  
[info@secums.com](mailto:info@secums.com)