

SECULOK range

Interlocks for
Heavy Duty Applications



Trapped Key & Safety Gate Switch Interlocks



- ↳ 100% Stainless Steel 316L
- ↳ For all Operating Conditions
- ↳ Flexible Modular configuration



SECUMS Interlocks

Created in 2004 and based in Neuilly Plaisance in the Paris area, SECUMS Interlocks designs and manufactures the complete range of SECULOK products. SECUMS Interlocks Trapped Key technology provides up to SIL 3 (EN/IEC 62061), Category 4 and PLe (EN/ISO 13849-1) use suitable mechanical and electro-mechanical safety Interlocking solutions for use in a wide range of heavy duty guarding applications.

Since our company permanently listens to your needs, and thanks to our product development cycle, we offer you an ever wider range of products.

Expertise

Our expertise covers a wide scope of industrial heavy duty safeguarding applications from machine guarding, power generation and -distribution system interlocking to valve interlocking. Recently developed products included in this catalogue as an example of our innovative design and engineering capabilities are:

-SCB15: New design of solenoid controlled bolt lock with single or multiple operating key and /or optional safety key. The SCB features a unique compact design and meets with the highest standards for power locking applications.

- ASCL: New design of a robust solenoid controlled safety Gate Switch Interlock. The ASCL features a compact robust design, with optional access or safety key controls. The compact design and reliable locking latch provides for optimal safety in the harshest operating conditions.

SECUMS Interlocks Advantages

SECUMS Interlocks is an “all out of one hand” guarding solution provider, specialized in complementing his product offering with the design of innovative on demand products at the best price to quality ratio.

SECULOK modular system configuration offers you unmatched user flexibility and economics. SECULOK offers a for all industrial applications compatible key system, inclusive Valve Interlocking. SECULOK products are manufactured in full Stainless Steel 316L as a standard. SECULOK provides you with the best key management set up. SECULOK re-codeable locks and keys enables you to change your safety system by adding keys without having to replace existing locks.

SECUMS Interlocks implemented the ISO 9001/2008 certification procedures to constantly improve its service.

Our Values

Client satisfaction is our top level priority.

We work in strict compliance with ecologic constraints by offering you products that can be 100% recycled and reused.

As to ensure long term development of the company, SECUMS Interlocks relies only on private investors who share our view of long term growth.

Summary



Company profile	2
Key and Coding	
SECULOK CQ-CQC – Keys and Key Identification.....	4
SECULOK RAT – Emergency key locking panel.....	5
Power Isolation	
SECULOK BLT – Bolt Lock.....	6
SECULOK BLT HC – Consignation lock with padlock.....	7
SECULOK SCB – Solenoid controlled Boltlock.....	8
Control and Power Isolation	
SECULOK SWL – Key Switch Lock 16Amp.....	9
SECULOK SWL HC – Key switch Lock 16 Amp with padlocking device.....	10
SECULOK SWL 25/32/63/100 – Key Switch Lock 25 to 100 Amp.....	11
SECULOK IMA – IP65 Power Isolation Key Switch.....	12
SECULOK SCL – Solenoid Controlled Switch Lock.....	13
SECULOK SCL 3P -Solenoid controlled Switch Lock / 3 Positions: on-stop request-off.....	14
SECULOK SCL 3PA – Solenoid controlled Switch Lock / 3 Positions: On-Off-Key free.....	15
SECULOK SCL HC – Solenoid controlled Switch lock with padlocking device.....	16
SECULOK SCL 25/32/63/100 – Key switch solenoid lock 25 to 100 Amp.....	17
SECULOK SKS – Solenoid Key Switch.....	18
SECULOK RLS – Mini Solenoid Lock.....	19
SECULOK TIMLOCK – Electronic Time Delay Interlock.....	20
SECULOK SPEEDLOCK – Zero Speed Interlock.....	21
Key Exchange	
SECULOK EXL – Key Exchange Unit.....	22
SECULOK TCL – Key Exchange Panel.....	23
Door- Access Locks	
SECULOK ACS – Single Access Interlock.....	24
SECULOK ACS 2E – 2 Key Access Interlock.....	25
SECULOK ACS 3E – 3 Key Access Interlock.....	26
SECULOK ACS HC – Access Interlocks with padlock device.....	27
Safety Gate Switch Interlocks (SECULOK SGSI series)	
SECULOK ALMCU – SafetyGate Switch with Latch.....	28
SECULOK ACSTO – Safety Gate Switch Interlock.....	29
SECULOK ASCL – Solenoid Controlled Access Lock.....	30
SECULOK ASCL 1 E – Solenoid controlled Access lock with safety key.....	31
SECULOK HC&LQ – Padlock Devices and Latches for Access Locks.....	32
Key Switch Lock and Module Contact	
SECULOK EXLT1 MCU – Key operated Safety Switch.....	33
SECULOK MCU – Safety Switch Contact Module.....	34
Key Management Systems	
SECULOK BHC – Lock with Padlock guarding Rail.....	35
Hydraulic and pneumatic valve	
SECULOK VPN-VPH - Pneumatic & Hydraulic Valve Lock.....	36
Valves Interlocks	
SECULOK 90L – Interlock for Lever Operated Valves.....	37
SECULOK MTL – Interlock for Handwheel Operated Valves.....	38
SECULOK CVL – Lockout for Handwheel Valves.....	39
<i>For the complete range of Valve Interlocks, please refer to our SECULOK IVL Catalogue</i>	
Contact	40



Ref: CQ

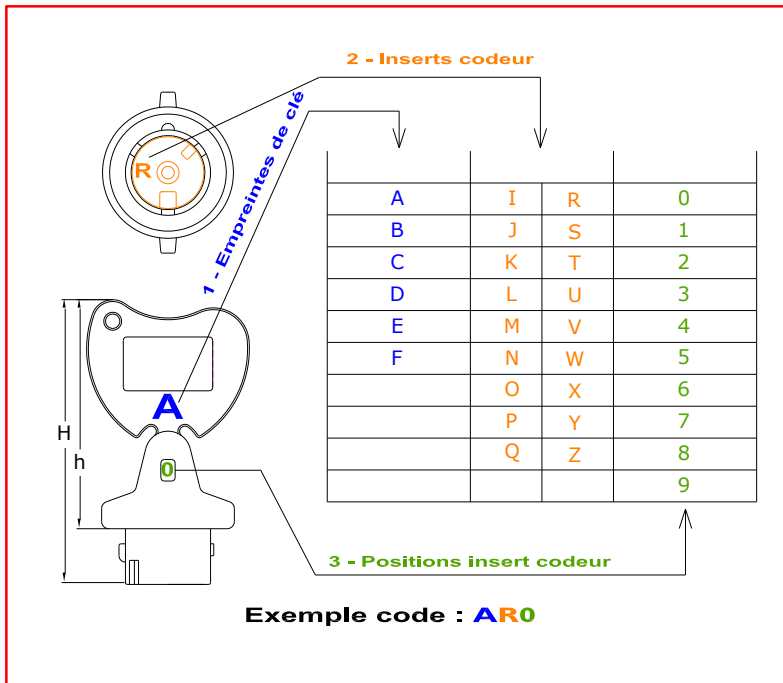
Characteristics:

- 2 key types with incorporated lock ingress protection:
- CQ:** Standard with over torsion breakpoint to protect the lock in case of operator over torsion operation attempt.
- CQC:** Compact for limited space environments, key marking on both key wing sides.
- Key combinations: 1080 attributed by SECUMS Interlocks.
- Marking: Standard: per identification **ref.** specified below.
Customized: max. 3 rows-6 characters per row.

Materials: Stainless Steel 316L

Options:

- PC: Spare key with key tag (marking both sides on request)
- MK: Master key on request (not advised considering risk of abuse)



Ref: CQC



Ref: CQ-PC



Ref: CQ-C0.25

Standard Key Identification :

- For Operation keys: P1, P2, P3, P4, P5, P6, P7, P8, P9, P0,
- For Safety keys: SAFETY P1, SAFETY P2,
- For Spare keys: « DANGER SPARE KEY », for safety reasons, they are delivered with key tag on which a warning printed on a red label.
In case of key loss, we advise you to have all locks recoded.

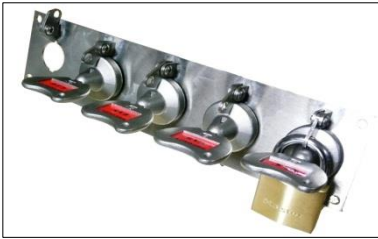
References examples:

- CQ:** Standard key with incorporated lock ingress protection.
- CQC-PC:** Compact key with incorporated lock ingress protection and key tag
- CQ :** Standard key coding with combination AR0 and P1 marking.
- CQ-SP:** Spare key if resupplied, please specify the coding type and the coding position (ex:AR0)

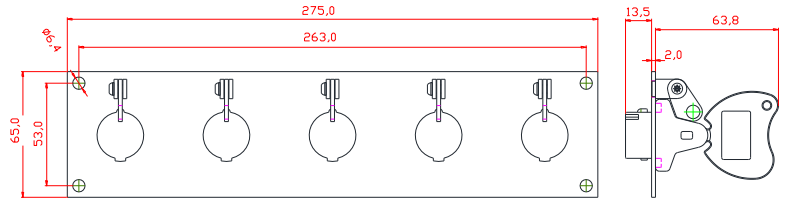
Emergency Key locking panel



Key locking panel for max 5 padlock able Emergency Keys



Ref: RAT-5E



1080 "standard" Key Combinations available, other combinations on request

CLIENT	N° de compte	Dépt.	Ville												CLIENT ou site FINAL			
Clé - A	I	J	K	L	M	N	O	P	Q	R	S	T	U	V	W	X	Y	Z
0																		
1																		
2																		
3																		
4																		
5																		
6																		
7																		
8																		
9																		
Clé - B	I	J	K	L	M	N	O	P	Q	R	S	T	U	V	W	X	Y	Z
0																		
1																		
2																		
3																		
4																		
5																		
6																		
7																		
8																		
9																		
Clé - C	I	J	K	L	M	N	O	P	Q	R	S	T	U	V	W	X	Y	Z
0																		
1																		
2																		
3																		
4																		
5																		
6																		
7																		
8																		
9																		
Clé - D	I	J	K	L	M	N	O	P	Q	R	S	T	U	V	W	X	Y	Z
0																		
1																		
2																		
3																		
4																		
5																		
6																		
7																		
8																		
9																		
Clé - E	I	J	K	L	M	N	O	P	Q	R	S	T	U	V	W	X	Y	Z
0																		
1																		
2																		
3																		
4																		
5																		
6																		
7																		
8																		
9																		
Clé - F	I	J	K	L	M	N	O	P	Q	R	S	T	U	V	W	X	Y	Z
0																		
1																		
2																		
3																		
4																		
5																		
6																		
7																		
8																		
9																		



Ref: BLTHC-CE

Characteristics:

Consignation key trapped by padlock
Available up to 5 lock modules ref: **2E,3 E, 4E**
- Hense of padlock diameter 6 mm max

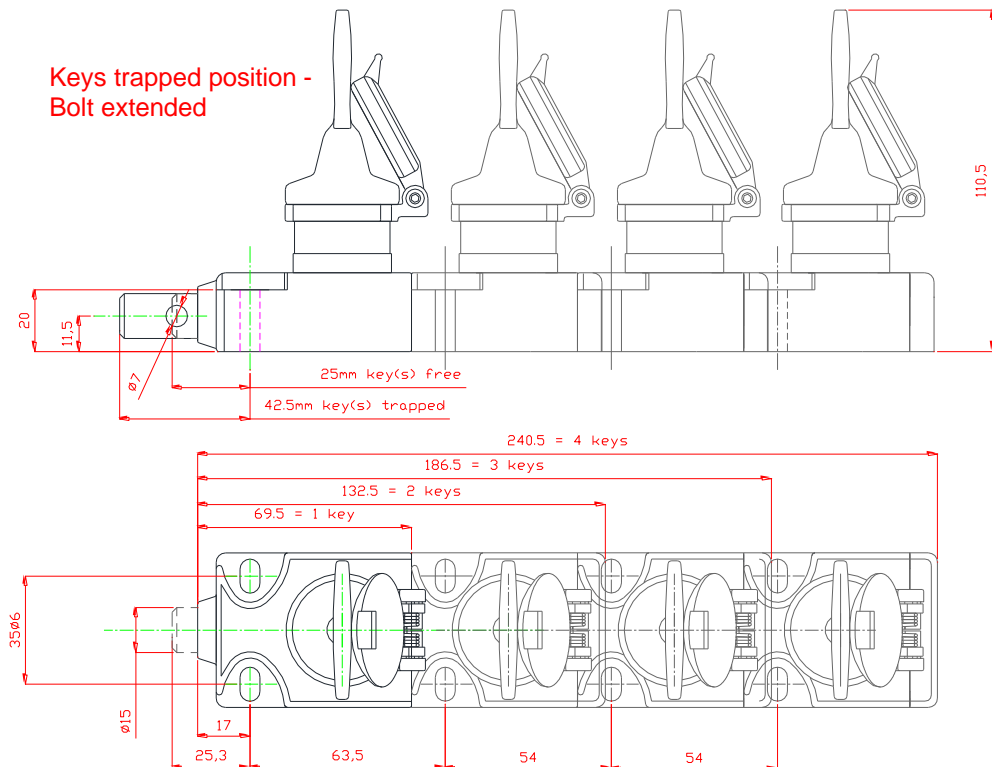
Materials: Stainless Steel 316

Options:

- Lock Dustcover ref: **CE**
- Electrical contacts:
 - 1NO+1NC ref: **MCUOF**
 - 2NO (free key, extended bolt) ref: **MCU2O**
 - 2NC (free key, extended bolt) ref: **MCU2F**

Operating Principle:

Key free when bolt trapped. Key trapped and bolt extended, padlock installed after inserting and turning the key.



References examples:

BLTHC-CE: 1 key lock, 1key trapped with padlock and dustcover

BLTHC-2E-CE-MCUOF: 2 keys lock, 2 keys trapped with padlock and dustcover, contact 1NO+1NC



Ref: SCB15-20-24V-CE

Characteristics :

- Electromechanical unlocking.
- Solenoid monitoring contacts 2NC and 2 NC bolt monitoring contacts (Failsafe), 100% duty cycle, LED, and override system. Solenoid voltage: 24V DC
- Bolt diameter 8mm **ref: SCB8** , 10mm **ref: SCBT10** and 15 mm **ref: SCB15**
- 2 key control (2 key entries) **ref:2E**
- Bolt travel: 15mm

Material : Lock housing POM , bolt-lockcylinder stainless steel 316L, solenoid housing polyester paint finished zamak

Options :

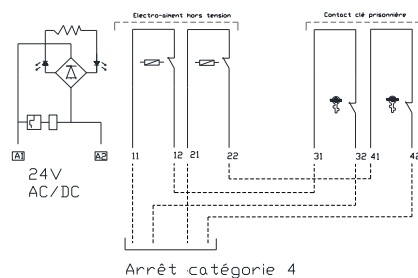
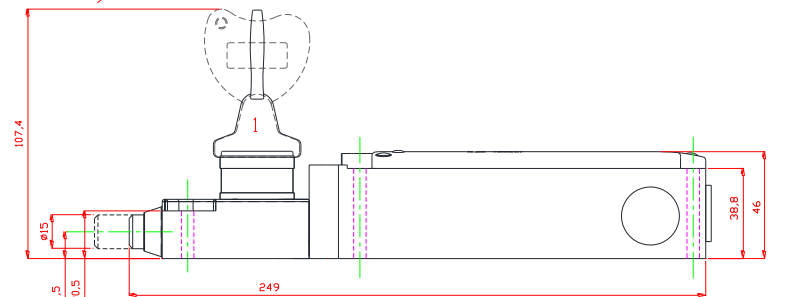
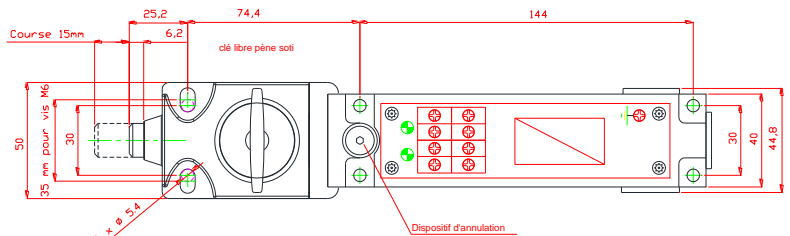
- Supply 230volts **ref: 230V**
- Supply 110volts **ref: 110V**
- Supply 48 volts ac/dc **ref: 48V**
- Springloaded dustcap, **ref :CE**
- Other contact configurations: please do contact us

Operating principle:

Solenoid activation- Solenoid safety contacts open- LED on – provides authorization to release the key and extend the bolt, and with bolt extension the 2 boltoperared safety contacts are opened.

Technical Specification

Power supply: 24V AC/DC -10%/+25%
 Solenoid monitoring contacts: 2NC 6A 240V
 Bolt/key monitoring : 2NC AC15-10A 240V
 LED: 2 x green
 Wiring: 1 x 0.34² max 2 x 1.5²
 Cable Gland Entries: 3 positions M20
 Mounting: FOB
 Fixing: M5 x 6
 Temperature: Min-25°C. Max 60°C.
 Protection: IP67 according to EN 60529



References Examples :

SCB15-2020-24V-CE : Solenoid controlled boltlock Ø 15mm, supply24Volts ac/dc, 1Key, (free, bolt shot) and Dustcover.

SCB15-2E-2020-110V : Solenoid controlled Boltlock Ø 15mm, supply 110 Volts ac/dc, 2 Keys (free, bolt shot)



Ref: SWL-202F

Characteristics:

Key operated power isolation or circuit control switch lock
Standard sequence: key release when power «off»
- Panel mounting (BOB), at option choice wall-mounted (FOB)
- 1 to 5 locks (keys). Multiple lock ref: **2E, 3E, 4E, 5E**

Materials: Stainless Steel 316

Electrical features:

Contacts: 2NO+2NC AC21 16A, AC23 4kW/230V, 7.5/400V, AC3 3kW/230V, 4 kW/ 400V

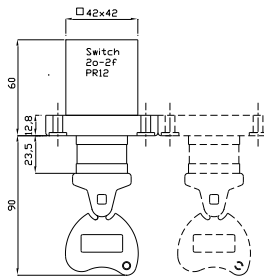
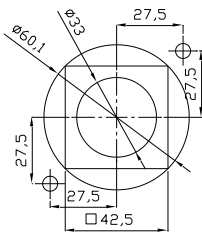
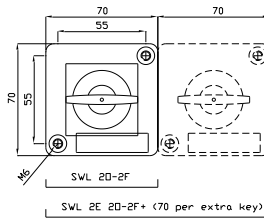
Options:

- 1 switch per lock ref: **X** (between number of locks and switch contacts ordering reference)
- Contacts: 3NO+1NC key free ref: **3O1F**
- Contacts: 4NO key free ref: **4O**
- Lock dustcover ref: **CE**
- In enclosure-IP55 polycarbonat ref: **IP55** (Dust cover included)
- Padlocking device , 2x8,2 mm holes ref: **HC2**

Operating principle:

Turn the key to operate the switch, key released in 1 position only

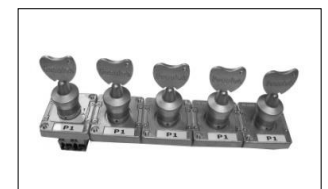
contact	1-2	3-4	5-6	7-8
key position				
Clé free 0				
Key trapped 1				



Ref: SWL-202F-IP55M



Ref: SWL-202F-HC2



Ref: SWL5E-202F

References examples:

- SWL 202F:** Lock with 1 key, 2NO+2NC contacts
- SWL 202F-IP55:** Lock with 1 key, 2NO+2NC contacts, in IP55 enclosure
- SWL 202F-CE:** Lock with 1 key, 2NO+2NC contacts, lock dustcover
- SWL2E-202F-CE:** 2 keys lock, 2NO+2NC contacts, lock dustcovers
- SWL4E-X-202F-CE:** 4 keys lock, 4x 2NO+2NC contacts, lock dustcovers
- SWL5E-4O-CE:** 5 keys lock, 4NO contacts, lock dustcovers

Key switch Lock 16 Amp with padlocking device



Characteristics:

Key operated power isolation or circuit control switch lock Standard sequence: key release when power «off»
Padlock in Off position key free or in ON position Key trapped, for padlock and diameter 8 mm maximum
- Wall-mounted (FOB)
- 1 to 5 locks (keys). Multiple lock ref: **2E, 3E, 4E, 5E**

Materials: Stainless Steel 316

Electrical features:

Contacts: 2NO+2NC AC21 16A, AC23 4kW/230V, 7.5/400V, AC3 3kW/230V, 4 kW/ 400V

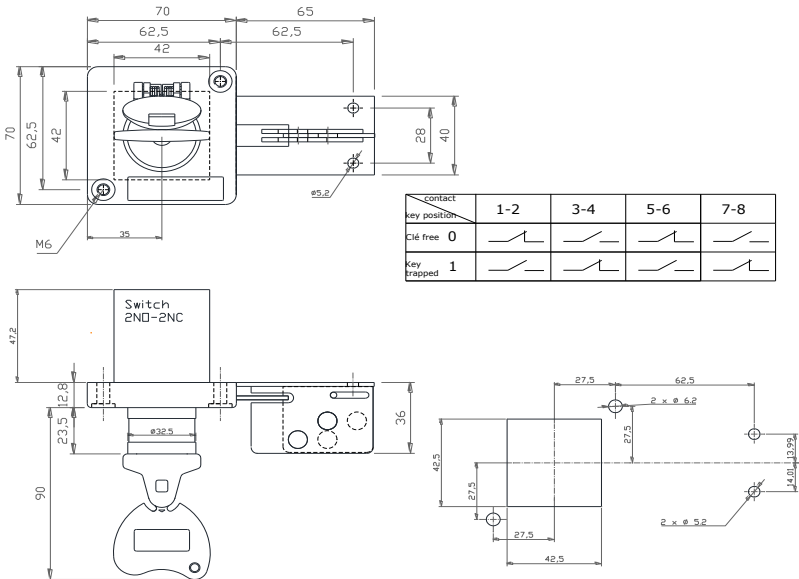
Options:

- 1 switch per lock ref: **X** (between number of locks and switch contacts ordering reference)
- Contacts: 3NO+1NC key free ref: **3O1F**
- Contacts: 4NO key free ref: **4O**
- Lock dustcover ref: **CE**
- In enclosure-IP55 polycarbonate ref: **IP55** (Dust cover included)
- Key free in On and Off position ref: **SP**

Ref: SWL-202F

Operating principle:

Turn the key to operate the switch, release the key (in 0 position only) and padlocked the switch.



Ref: SWL2E-202F-CE-HC2



Ref: SWL-202F-COM-HC2

References examples:

SWL-202F-HC2: Lock with 1 key, 2NO-2NC contacts, padlocking device

SWL-3O1F-CE-HC: Lock with 1 key, 3NO-1NC contacts- key free,dust cover, padlocking device

SWL2E-202F-HC2: Lock with 2 keys, padlocking device



Ref: SWL32-40

Characteristics:

Key operated power isolation or control switch lock.
Standard sequence: key release when power «off»
Panel mounting (BOB), at option choice wall-mounted (FOB)
- 1 to 4 locks (keys). Multiple lock ref: **2E, 3E, 4E, 5E**

Materials: Stainless Steel 316

Electrical features (under 400Volts):

- 3NO 25 A contacts (AC23=7.5kW) ref: **25**
- 3NO 32 A contacts (AC23= 11kW) ref: **32**
- 3NO 63 A contacts (AC23=22kW) ref: **63**
- 3NO 100 A contacts (AC23=37kW) ref:**100**

Options:

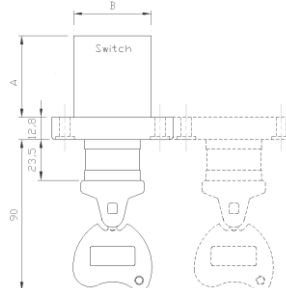
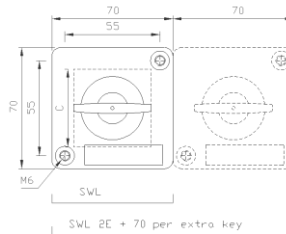
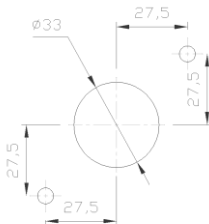
- Contacts: 4NO key free ref: **40**
- Contacts: 3N+1NC key free ref: **301F**
- Lock dustcover ref: **CE**
- In enclosure (3locks maximum) ref: **IP55** (dustcovers included)
- Interlocking from 2 keys (please contact us)

Operating principle:

Turn the key to operate the switch, key free in 1 position only

contact	1-2	3-4	5-6	OPTION 40 7-8	OPTION 301F 7-8
key position					
Clé free 0					
Key trapped 1					

Reference Dimensions	25	32	63	100
A	63	63	87	87
B 30/40	35/49	50/65	72/65	72/65
C	73	73	83	83



Ref: SWL32-2E-40



Ref: SWL25-40-IP55

References examples:

- SWL32-40:** Lock with 1 key, 32A switch, 4NO contacts- key free
- SWL25-40-IP55:** Lock with 1 key, 25A switch, 4NO contacts- key free, in enclosure IP55
- SWL63-2E-40-CE:** Lock with 2 keys, 63A switch, 4NO contacts –key free, lock dustcover
- SWL100-3E-40:** Lock with 3 keys, 100A dustcover switch, 4NO contacts–key free



Ref: IMA 63-3E



Characteristics:

- Power supply isolation controlled by 1 to 4 keys
- EN 60204-1 compliant disconnecter switch
- Red handle/ yellow crown with Padlock/Tag out facility
- **25 to 315 Amps: see order references scheme.**
- 400 Volts
- Four poles (3+N)

Materials: Stainless Steel 316 lock, polycarbonat case

Options:

- 6 poles **ref: 6P**
- Lock dustcover **ref: CE**
- Solenoïd lock release 1 key **ref: SCB**
- Solenoïd lock release 1 key with time delay from 0 to 999 seconds **ref: TIM**
- Solenoïd lock release 1 key with zero voltage (BEMF) **ref: RVN**

Reference	Operational rated power at 400V Max	Uninterrupted Rated current In
IMA 32	15	32
IMA 63	37	63
IMA 100	50	100
IMA 160	55	160
IMA 250	90	250
IMA 400	130	400



Ref: IMA 250-1E

Enclosure dimensions depend on the number of keys:

IMA63-3E: 250 x 375 x180 mm

References examples:

IMA 32-1E-CE: 15 kW switch, 1 key, lock dustcover

IMA 32-2E-CE: 15 kW switch, 2 keys, lock dustcovers

IMA 32-SCB-1E:15 kW switch, 24Vsolenoid unlocking 1key

IMA 32-TIM-1E: 15 kW switch, solenoid unlocking with time delay, power supply 24V 1key

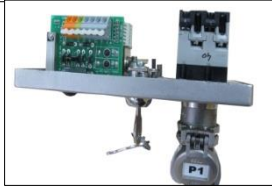
IMA 32-RVN-1E-CE:15 kW switch, unlocking with BEMF relais, power supply 24V, 1key, lock dustcover

IMA 32- 4E-CE: 15 kW switch, 4 keys, lock dustcovers

IMA 250-2E-CE: 90 kW switch, 2 keys, lock dustcovers



Ref: SCL-202F-24V



Characteristics:

Solenoid controlled single-key or multi-key switch interlock
Suitable for use in high-risk, category 4 applications

- 1 to 4 locks (keys), multi-key ref: **2E, 3E, 4E**
- 2NO+2NC contacts + 2 solenoid position control contacts (positive breaking safety contacts)
- 100% Solenoid Duty Cycle, LED, Push Button, Override key

Materials: Stainless Steel 316

Electrical features:

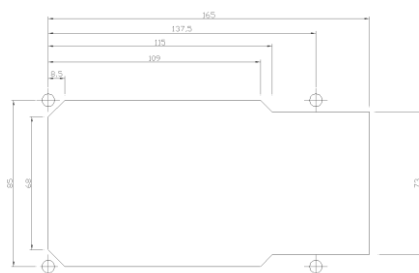
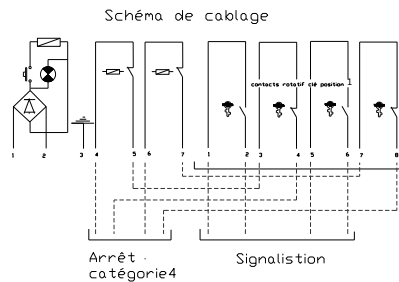
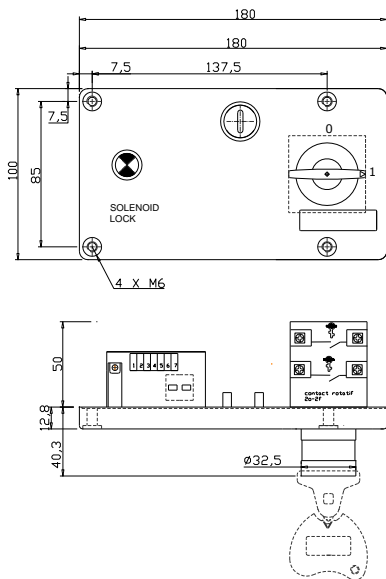
- 24 V AC/DC 13 W power supply
- Contacts: AC2116A, AC23 4kW/230V, 7.5/400V, AC3 3kW/230V, 4kW/400V

Options:

- 48 V power supply ref: **48V**
- 3NO+1NC contacts (free key) ref: **301F**
- 4NO contacts (free key) ref: **40**
- Lock dustcover ref: **CE**
- In enclosure Polycarbonat IP55 ref: **IP55**
- In enclosure Metal IP55 ref: **IP55M**

Operating principle:

Energised solenoid enables key release after rundown time or operating cycle completion and prevents unauthorized restart. This unit is generally used in conjunction with the ACS series of Access interlocks



References examples:

- SCL 202F-24V:** 1 key electromechanical lock, 24 volts 2NO+2C contacts
- SCL 40-48V:** 1 key electromechanical lock, 48 volts 4NO contacts -free key
- SCL-2E-301F-24V-CE:** 2 keys electromechanical lock, 24 volts 3NO+1NC contacts with lock dustcover
- SCL-3E- 202F-24V:** 3 keys electromechanical lock, 24 volts 2NO+2NC contacts
- SCL-3E- 40-24V-IP55:** 3 keys electromechanical lock, 24 volts 4NO contacts in polycarbonat enclosure



Ref:SCL3P-202F-24V



Characteristics:

For automated environments: Key controlled Stop Request and key release through solenoid after run down cycle.

3 Position Keyoperated rotary switch lock: 2=« on », 1=« stop request », 0= « off » (key free).

- 1 to 4 locks (keys), multiple key ref: **2E, 3E, 4E**
- 2NO+2NC contacts + 2 solenoid position control contacts (positive breaking safety contacts)
- 100% Solenoid Duty Cycle, LED, push button, override key.

Materials: Stainless Steel 316

Electrical features:

- 24 Volts AC/DC 13W power supply
- 2NO+2NC 3 positions AC21 16A, AC23 4kW/230V, 7.5/400V, AC3 3kW/ 230V,4 kW/ 400V

Options:

- 48 Volts AC/DC power supply ref: **48V**
- Lock dustcover ref: **CE**
- In enclosure Polycarbonat IP55 ref: **IP55**

Operating Principle :

Turning the key from position 2 to position 1 requests for machine stop. At full stop the LED illuminates and solenoid energisation unlocks the key to allow rotation and key release from position 1 to position 0 to prevent unauthorized restart.

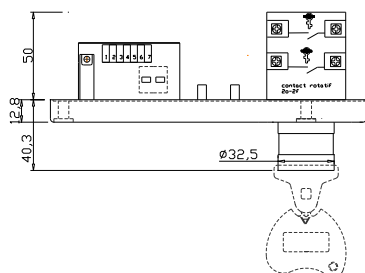
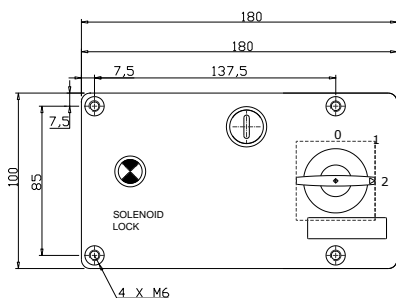
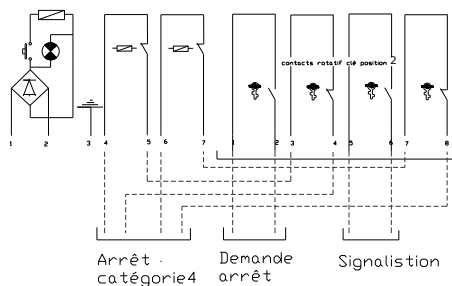


Schéma de câblage



contact	1-2	3-4	5-6	7-8
Clé libre 0				
Clé prisonnière 1				
Clé prisonnière 2				

References examples:

SCL3P-202F-48V: solenoid control lock 1 key, 48 volts 2NO+2NC contacts

SCL3P-202F-24V-IP55: solenoid control lock 1 key 24 volts 2NO+2NC contacts, in enclosure IP55

SCL3P-2E- 202F-24V: solenoid control 2 keys lock 24 volts 2NO+2NC contacts

SCL3P-3E-202F-24V-CE: solenoid control 3 keys lock 24 volts 2NO+2NC contacts lock dustcovers



Ref:SCL3PA-202F-24V



Characteristics:

For systems with inertia: Remote controlled circuit locking and key release through solenoid.

3 Position rotary switch lock: 2=« on », 1=« stop » and time delay triggering, 0= « off » (key free)

- 1 to 4 locks (keys). Multiple key ref: **2E, 3E, 4E**
- 2NO+2NC contacts + 2 solenoid position control contacts (positive breaking safety contacts)
- 100% Solenoid Duty Cycle, LED, push button, override key

Materials: Stainless Steel 316

Electrical features:

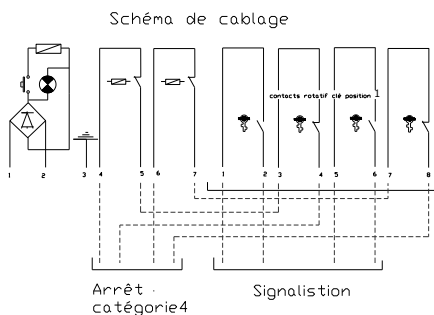
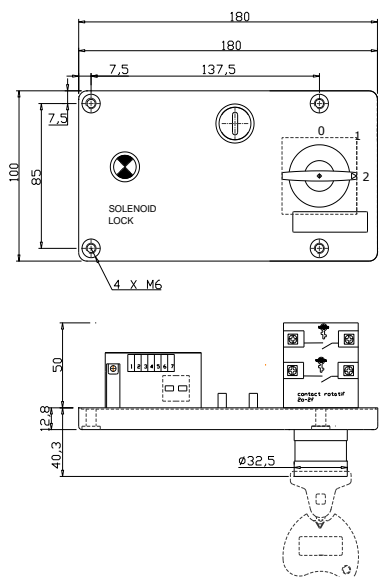
- 24 Volts AC/DC 13W power supply
- Contacts: 2NO+2NC 3 positions AC21 16A, AC23 4kW/230V, 7.5/ 400V, AC3 3kW/ 230V,4 kW/ 400V

Options:

- 48 volts AC/DC power supply ref: **48V**
- Lock dustcover ref: **CE**
- In enclosure Polycarbonat IP55 ref: **IP55**

Operating Principle :

Turning the key from position 2 to position 1 requests for machine stop, and triggers the time delay condition. Once the condition is fulfilled, solenoid energisation unlocks the key to allow rotation and key release from position 1 to position 0 to prevent unauthorized restart.



POSITION CLE	CONTACTS ROTATIFS CLE 202F				CONTACTS ELECTRO-AIMANT	
	1-2	3-4	5-6	7-8	4-5	6-7
POS 0 clé libre						
POS 1 arrêt						
POS 2 Marche						

References examples:

SCL3PA-202F-48V-CE: solenoid controlled lock 1 key, 48 volts 2NO+2NC contacts, lock dustcover

SCL3PA-202F-24V-IP55: solenoid controlled lock 1 key, 24 volts 2NO+2NC contacts , in enclosure

SCL3PA-2E- 202F-48V: solenoid controlled 2 keys lock, 48 volts 2NO+2NC contacts

SCL3PA-3E-202F-24V-CE: solenoid controlled 3 keys lock, 24 volts 2NO+2NC contacts,key dustcovers



Ref: SCL-202F-24V-CE-HC2

Characteristics:

- Solenoid controlled single-key or multi-key switch interlock with padlocking device 2 holes for shackle diameter 8 mm max **ref:HC2**
- Padlockable in both Key trapped or key free position.
- 1 to 5 locks (keys), multi-key **ref: 2E, 3E, 4E, 5E**
- 2NO+2NC contacts + 2 solenoid position control contacts **ref: 202F** (positive breaking safety contacts)
- 100% Solenoid Duty Cycle, LED, Push Button, Override key

Materials: Stainless Steel 316

Electrical features:

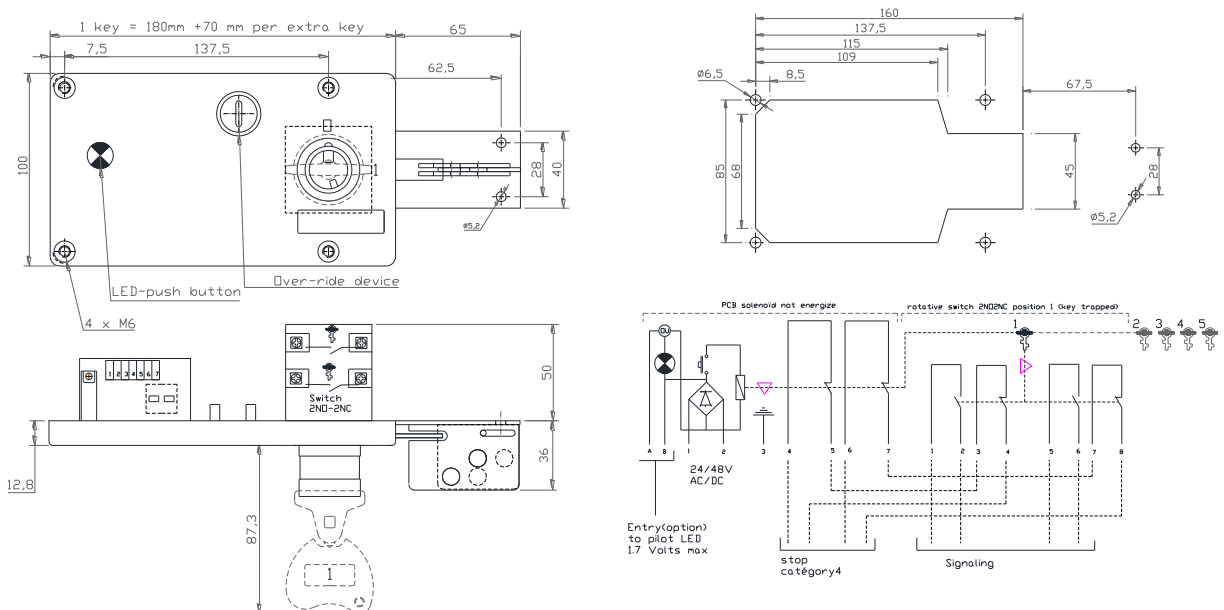
- 24 V AC/DC 13 W power supply **ref: 24V**
- Contacts: AC2116A, AC23 4kW/230V, 7.5/400V, AC3 3kW/230V, 4kW/400V

Options:

- 48 V power supply **ref: 48V**
- 3NO+1NC contacts (free key) **ref: 301F - 4NO** contacts (free key) **ref: 40**
- Lock dustcover **ref: CE**
- In Metal enclosure-stainless steel IP55 **ref: IP55M**

Operating principle:

Energised solenoid enables key release after rundown time or operating cycle completion and prevents unauthorized restart. Key free or key trapped possibility to use the padlocking device.



Reference examples:

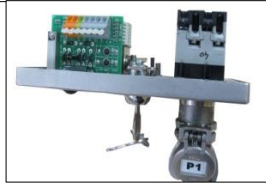
- SCL-202F-24V-HC2:** 1 key electromechanical lock, 24 volts 2NO+2C contacts with padlock device
- SCL-2E-40-24V-CE-HC2:** 2 keys electromechanical lock, 24 volts 4NO contacts with lock dustcover and padlock device

SCL
25/32/
63/100

Key switch solenoid lock 25 to 100 Amp



Ref: SCL25-40-24V



Characteristics:

- Key operated power isolation control by solenoid switch lock.
- Standard sequence: key release when power «off» and solenoid energize
- Panel mounting (BOB)
- 1 to 4 locks (keys). Multiple lock ref: **2E, 3E, 4E, 5E**

Materials: Stainless Steel 316

Electrical features:

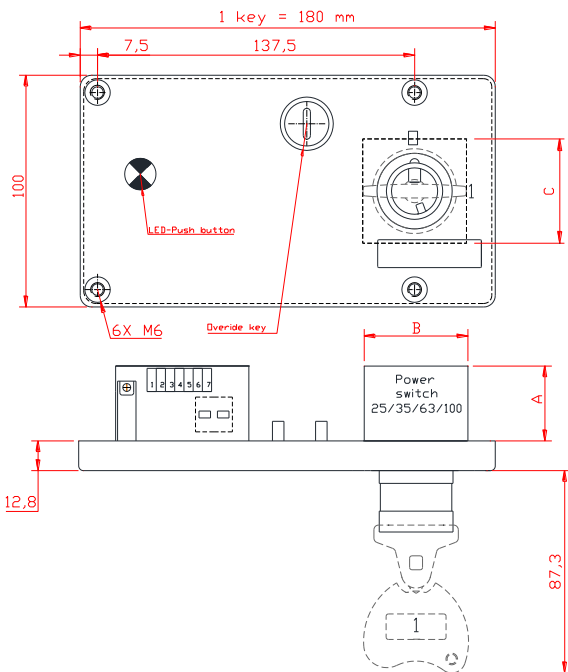
- Power supply: 24 V AC/DC 13 W
- Cotrol position solenoid contact: 2NC 3A
- 4NO 25 A contacts (AC23=7.5kW) ref: **25**
- 4NO 32 A contacts (AC23= 11kW) ref: **32**
- 4NO 63 A contacts (AC23=22kW) ref: **63**
- 4NO 100 A contacts (AC23=37kW) ref:**100**

Options:

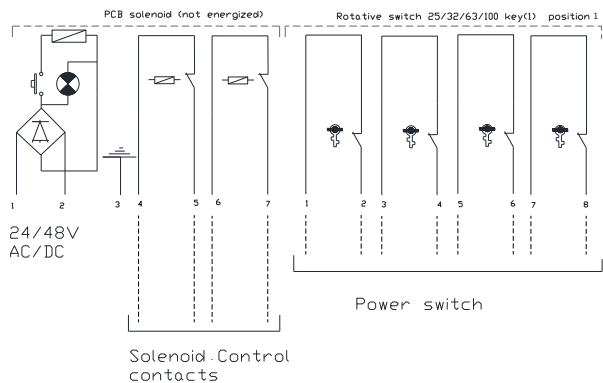
- Lock dustcover ref: **CE**
- In enclosure SS304L (3 keys maximum) ref: **IP55M** (dustcovers included)
- Interlocking from 2 keys (please contact us)

Principle:

Energised solenoid enables key release and operate power switch after rundown time or operating cycle completion and prevents unauthorized restart. This unit is generally used in conjunction with the ACS series of Access interlocks



Wiring scheme advise for best safety level category 4



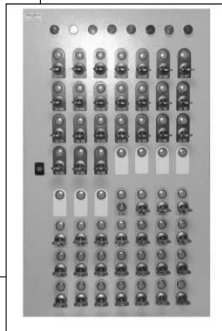
Reference Dimensions	25	32	63	100
A	63	63	87	87
B 30/40	35/49	50/65	65/72	65/72
C	73	73	83	83

References examples:

- SCL25-40-24V:** 1key electromechanical lock with power switch 25Amp ,4 contacts NO power supply 24 Volts
- SCL32-2E-40-24V:** 2 keys electromechanical lock with power switch 32 Amp, 4 contacts NO, power supply 24 Volts
- SCL32-40-24V-IP55M:** 1 key electromechanical lock with power switch 32 Amp, 4 contact NO, power supply 24 Volts



Automated 49 keys management cabinet



Ref: RLS-OF-24V-CE

Characteristics:

- Solenoid lock for automated key management, as to provide for key release and tracking.
- A changeover switch provides information on key presence.
- Standard version panel mounting (BOB).

Materials: Stainless Steel 316

Electrical features:

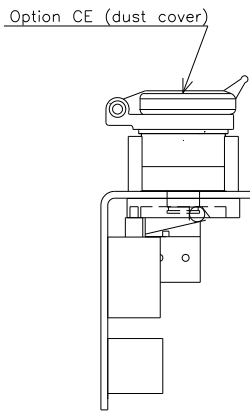
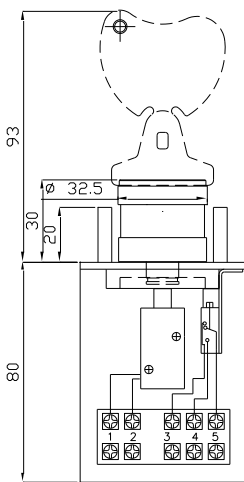
- Contacts: 1NO+1NC 6A/250v,3A/24V
- 100% Solenoid Duty Cycle
- Power supply: 24 Volts DC +/-5%, 8W

Options:

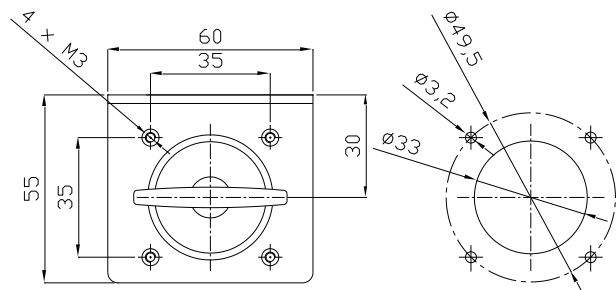
- Lock dustcover ref: **CE**
- 12 Volts DC power supply ref: **12V**
- In IP55 enclosure ref: **IP55**
- Multiple locks mounted onto plate or in cabinet (on request, *please contact us*)

Operating principle:

Key release by energized solenoid, a position monitoring switch indicates if the key is trapped or released



Key position	Connection terminal			
	3-5	4-5	1	2
0 (key free)			-	+
1 (key trapped)			-	+



References examples:

- RLSOF-24V:** Solenoid lock with 1 key, 24VDC, 1NO+1NC changeover switch
- RLSOF-24V-CE:** Solenoid lock with 1 key, 24VDC, 1NO+1NC changeover switch, lock dustcover
- RLSOF-24V-IP55:** Solenoid lock with 1 key, 24VDC, 1NO+1NC changeover switch, in enclosure
- RLSOF-12V:** Solenoid lock with 1 key, 1NO+1NC changeover switch, 12V DC
- RLSOF-12V-CE:** Solenoid lock with 1 key, 1NO+1NC changeover switch, 12V DC, lock dustcover



Ref: TIMLOK-24V

Characteristics:

Remote control circuit interlocking with key release at the end of a pre-determined time delay period. 3 positions key switch operation: «on», «off» & «start» time delay, key free .
 - Adjustable time delay between 0 and 999 seconds
 - 1 to 3 locks (keys). Multiple key ref: 2E, 3E

Electrical features:

- 24 Volts AC/DC power supply ref: 24V
- 240 Volts ref: 240V
- 2NO+2NC contacts AC21 16A, AC23 4kW/230V, 7.5/ 400V, AC3 3kW/ 230V,4 kW/ 400V

Materials: Stainless Steel 316

Options:

- Lock dustcover ref: CE
- In enclosure Polycarbonat IP55: ref IP55

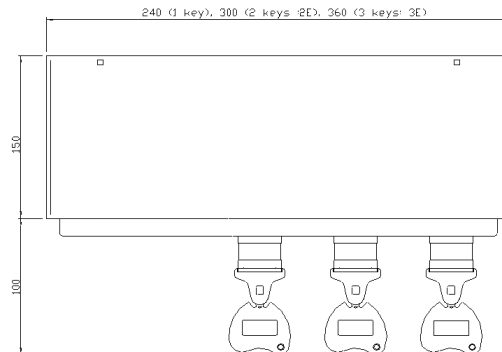
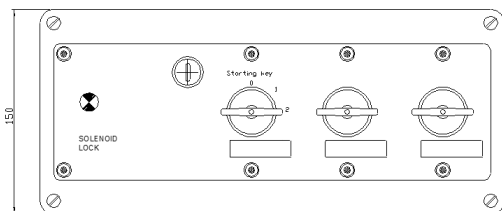
Operating Principle:

Turning the first key from position 2 to position 1 stops the system and starts the time delay period. After this time delay, key 1 can be removed, which releases the other keys. To restart, all keys must be inserted into the unit. Contacts 3-4 and 5-6 are safetycircuit contacts, contacts 7-8 for signaling, as shown in the scheme below.



Ref: TIMLOK -3E- 24V

CONNECTION TERMINAL			
Key position	3-4	5-6	7-8
0 (key free)			
1 (off)			
2 (on)			



References examples:

TIMLOCK-24V: TIMLOCK with 1 lock (key), 24 Volts supply

TIMLOCK-2E-240V-CE: TIMLOCK with 2 locks (keys), 240 Volts supply, lock dustcovers



Ref: SPEEDLOK-24V

Characteristics:

Remote control circuit interlocking with key release at the end of motor rotation. 5 positions key switch operation: «on», «off» & «start» speed zero, key free .

- Adjustable time delay between 0 and 999 seconds
- 1 to 5 locks (keys). Multiple key ref: **2E, 3E, 4E, 5E**

Electrical features:

- 24 Volts AC/DC power supply ref: **24V**,
- 240 Volts ref: **240V**
- 2NO+2NC contacts AC21 16A, AC23 4kW/230V, 7.5/ 400V, AC3 3kW/ 230V,4 kW/ 400V

Materials: Stainless Steel lock 316, enclosure 304

Options:

- Lock dustcover ref: **CE**
- Key 2 positions on & off (key free): ref: **2P**
- Key 3 positions On; stop request, Off(key free) ref: **3P**
- Detection 2 motors with 2 relays: ref:**2RVN**

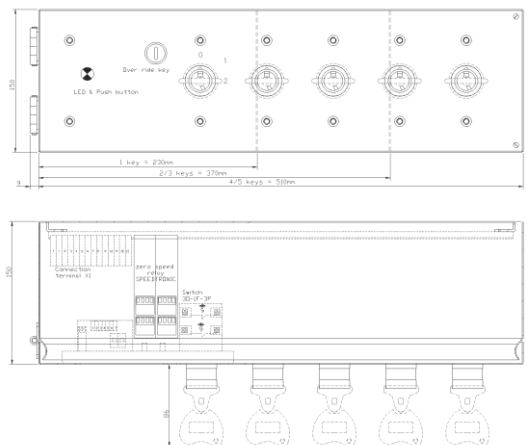
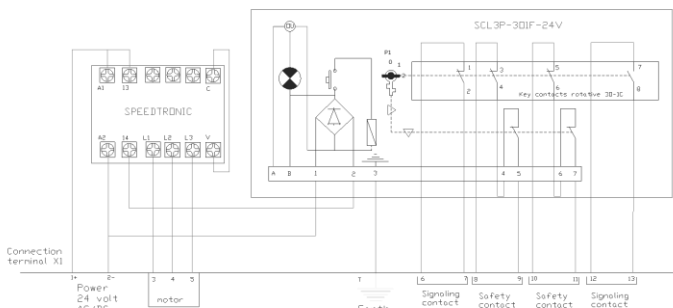
Operating Principle:

Turning the first key from position 2 to position 1 stops the system when the speed relay detect 0 speed, key 1 can be turn from 1 to 0 and removed, which releases the other keys. To restart, all keys must be inserted into the unit. Contacts 8-9 and 10-11 are safetycircuit contacts, contacts 7-8 12-13 for signaling, as shown in the scheme below.



Ref: SPEEDLOK -3E- 24V

Key position	CONNECTION TERMINAL CONTACT			
	6-7	8-9	10-11	12-13
POS 0 key free				
POS 1 Off				
POS 2 On				



References examples:

SPEEDLOK-24V: SPEEDLOK with 1 lock (key), 24 Volts supply

SPEEDLOK-2E-240V-CE: SPEEDLOK with 2 locks (keys), 240 Volts supply, lock dustcovers



Ref: EXL4E-1/3

Characteristics:

- Allows exchange of a number of keys against an other
- 2 to 6 keys ref: **2E, 3E, 4E, 5E, 6E**
- FOB (wall) mounting (BOB mounting possible at your choice)

Materials: Stainless Steel 316

Options:

- Electrical switch contacts: AC-15:400V/4A,
1NO+1NC ref: **MCUOF**
2NO (free key) ref: **MCU2O**
2NC (free key) ref: **MCU2F**
- Lock dustcover ref: **CE**

Note: the switch is always operated by the 1st key (operating key).

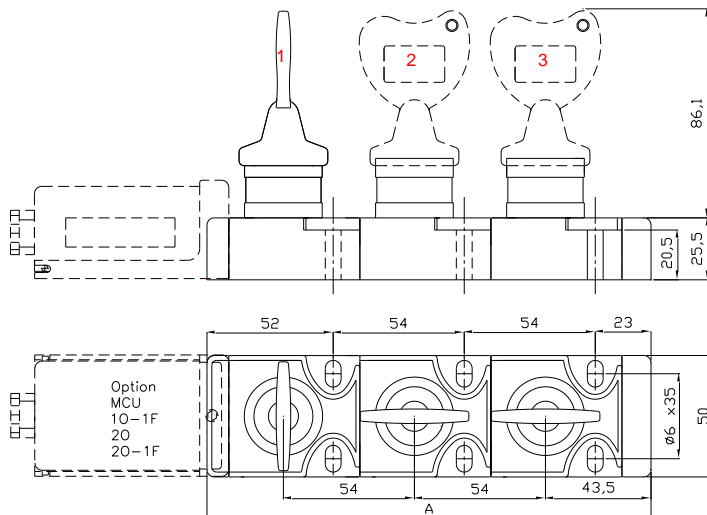
*For more than 6 keys exchange see product ref: **TCL***

Operating Principle:

Insertion of one or more operating keys releases one or more secondary keys. Operating key(s) are trapped when the secondary keys are released and reverse.

Nombre total de clés	A mm	Type d'échange	Nombre de clé mère	Nombre de clé fille
2E	129	1/1	1	1
3E	184	1/2	1	2
3E		2/1	2	1
4E	238	1/3	1	3
4E		2/2	2	2
4E	292	3/1	3	1
5E		1/4	1	4
5E		2/3	2	3

Nombre total de clés	A mm	Type d'échange	Nombre de clé mère	Nombre de clé fille
5E	292	3/2	3	2
5E		4/1	4	1
6E	346	1/5	1	5
6E		2/4	2	4
6E		3/3	3	3
6E		4/2	4	2
6E		5/1	5	1



Ref: EXL3E-1/2-MCU2O

References examples:

EXL-3E-1/2: 3 keys exchange unit, 1 key releases 2 trapped keys

EXL-4E-1/3-CE: 4 keys exchange unit, 1 key releases 3 trapped keys, lock dustcovers

EXL-6E-2/4-MCUOF-CE: 6 keys exchange, 2 keys release 4 trapped keys, 1NO+1NC contacts operated by the 2 operating keys, lock dustcovers

EXL-5E-1/4-MCU2O: 5 keys exchange unit, 1 key releases 4 trapped keys, 2NO contacts when the operating key is free



Ref: TCL20E-5/15

Characteristics:

- Allows exchange of 1 or a number of keys against another
- From 5 to maximum 36 keys, **ref: 5E to 42E**
- Rows include maximum 6 keys.
- Electrical contacts per lock (key) possible.
- Ease of use (no predefined key release sequence).
- Personalized identification marking

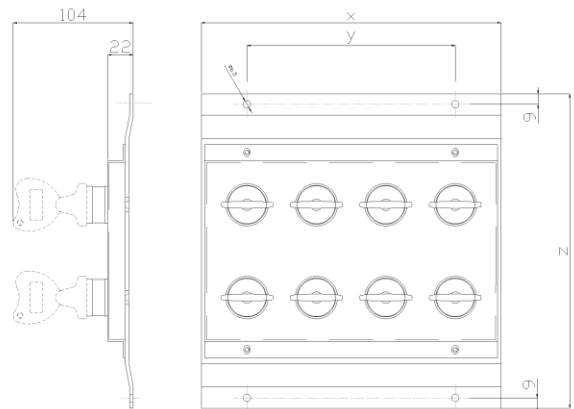
Materials: Stainless Steel 316

Options:

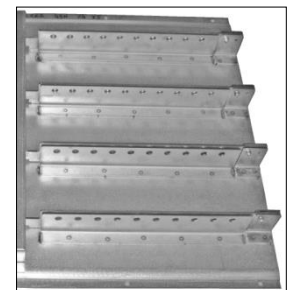
- Contact: 1NO-1NC, AC21 10A on lock **ref: OF**
For contact on particular lock, please contact us
- Key dustcover **ref: CE**
- Padlock guarding rail to lock/trap the first set of keys:
 - 10 locks **ref: H 10**
 - 20 locks **ref: H 20**
 - 30 locks **ref: H 30**
 - 40 locks **ref: H 40**

For the guarding rail operating principle see product **ref BHC**

Panel type with number of keys and rows	Maximum Number of keys « primary »	Maximum number of keys <secondary	Reference With max keys per row
A-8-2	4	4	TCL8E-4/4
B-12-2	6	6	TCL12E-6/6
C-18-3	6	12	TCL18E-6/12
	12	6	TCL18E-12/6
D-24-4	6	18	TCL24E-6/18
	12	12	TCL24E-12/12
	18	6	TCL24E-18/6
E-30-5	6	24	TCL30E-6/24
	12	18	TCL30E-12/18
	18	12	TCL30E-18/12
	24	6	TCL30E-24/6
F-36-6	6	30	TCL36E-6/30
	12	24	TCL36E-12/24
	18	18	TCL36E-18/18
G-42-7	6	36	TCL42E-6/36
	12	30	TCL42E-12/30



	x	y	z
A	250	200	260
B	350	300	260
C	350	300	315
D	350	300	370
E	350	300	425
F	350	300	480
G	350	300	535



Ref: H40

References examples:

TCL 12E-2/10: 12 keys panel with 2 free, 10 trapped

TCL 8E-1/4: 8 keys panel with 1 free, 4 trapped

TCL 12E-2/10-CE: 12 keys panel with 2 free, 10 trapped, with lock dustcovers

TCL 12E-2/10-CE-H10: 12 keys panel with 2 free, 10 trapped, with lock dustcovers, 10 padlocks rail traps the 2 operating keys (preventing release of access keys to the guarded area)



Ref: ACS-CE

Characteristics:

- Access control Interlock for any kind of door.
- 85 mm centre-distance 3 handing positions locking latch.
- Latch with locking claws
- Latch handle with incorporated ingress protection

Materials: Stainless Steel 316

Options:

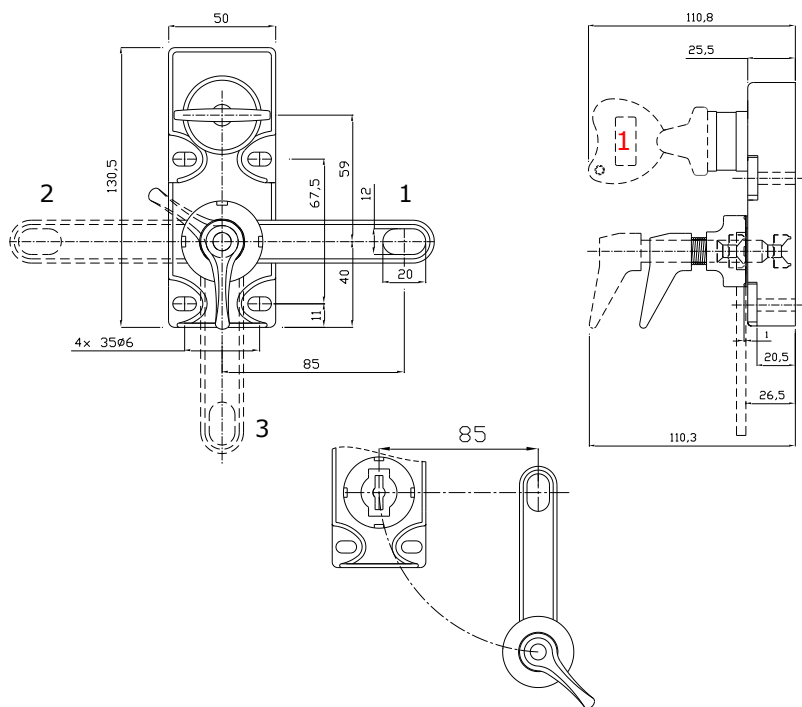
- Lock dustcover ref: **CE**
- Latch hole dustcover ref: **CEL**
- 20 cm chain latch ref: **C0.2**

Electrical contacts:

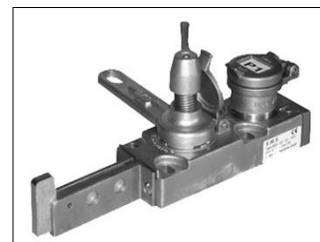
- 1NO+1NC ref: **MCUOF**
- 2NO (open door) ref: **MCU20**
- 2NC (open door) ref: **MCU2F**
- Padlocking device, 2 x8,2 mm holes ref: **HC**
- Enhanced protection (concrete) ref: **PR**

Operating Principle:

Key free = access door closed and locked. Inserting and turning the key frees the latch. The key remains trapped as long as the door is open.



Ref : ACS-CE-C0.2



Ref : ACS-HC-CE-CEL



Ref : ACS-CE-CEL-ATV

References examples:

- ACS:** Access lock, 85 mm latch
- ACS-CE:** Access lock, lock dustcover, 85mm latch
- ACS-C0.2:** Access lock, 20 cm chain latch
- ACS-CE-C0.2:** Access lock, lock dustcover, 20 cm chain latch
- ACS-CE-C0.2-MCU20:** Access lock, lock dustcover, chain latch 20 cm, 2NO contact



Ref: ACS2E-T1-CE

Characteristics:

- 2 Keys access control Interlock for all kinds of doors.
- 85 mm centre distance, 3 handing positions locking latch
- 2 Operation Keys **ref:T1**
- 1 Operation Key and 1 Safety Key (to avoid locking in) **ref: T2.**

Materials: Stainless Steel 316

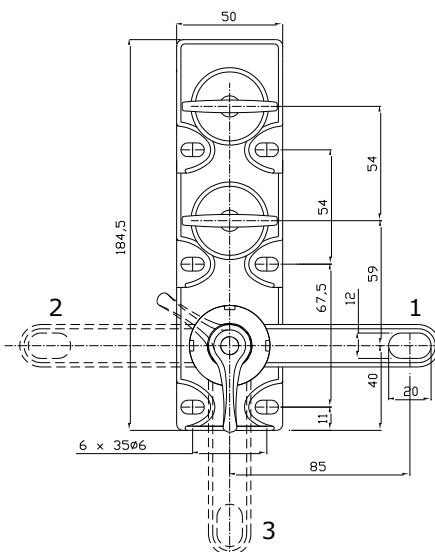
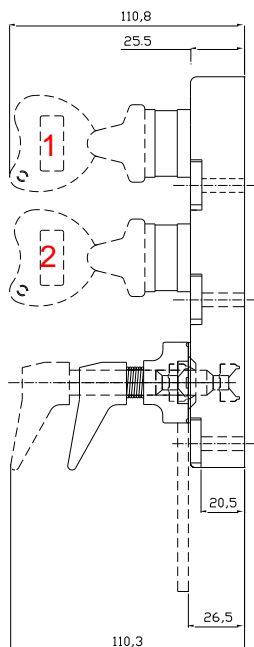
Options:

- Lock dustcover **ref: CE**
- Latch hole dustcover **ref: CEL**
- 20 cm chain latch **ref: C0.2**
- **Electrical contact:**
- 1NO+1NC **ref: MCUOF**
- 2NO (open door) **ref: MCU2O**
- 2NC (closed door) **ref: MCU2F**
- Padocking device, 2x8.2 mm holes **ref: HC**

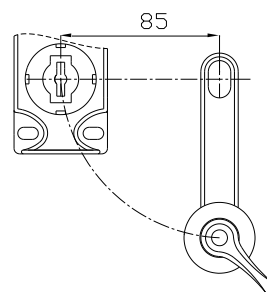
Operating Principle:

T1: 2 operating keys. Inserting and rotating both operation keys frees the latch. Keys remain trapped as long as door stays open.

T2: 1 operating key and 1 safety key, inserting the operation key and removing safety key unlocks the latch



Ref: ACS-2E-T2-CE



References examples:

- ACS-2E-T1-CE:** Access lock, 2 operation keys, lock dustcovers, 85 mm latch
- ACS-2E-T2-C0.2:** Access lock, 1 operation key, 1 safety key, 20 cm chain latch
- ACS-2E-T2-CE:** Access lock, 1 operation key, 1 safety key, 85 mm latch, lock dustcovers
- ACS-2E-T2-CE-C0.2:** Access lock, 1 operation key, 1 safety key, lock dustcovers, 20 cm chain latch



Ref: ACS-3E-T1-CE

Characteristics:

- 3 keys access control Interlock for all kind of doors.
- 85 mm centre-distance, 3 handing positions locking latch.
- 3 operation keys **ref:T1**
- 2 operation keys and one Safety key (to avoid locking in) **ref:T2**

Materials: Stainless Steel 316

Options:

- Lock dustcover **ref: CE**
- Latch hole dustcover **ref: CEL**
- 20 cm chain latch **ref: C0.2**

Electrical contacts:

- NO+NC **ref: MCUOF**
- 2NO (open door) **ref: MCU20**
- 2NC (closed door) **ref: MCU2F**
- Padlocking device, 2x 8,2 mm holes **ref: HC**

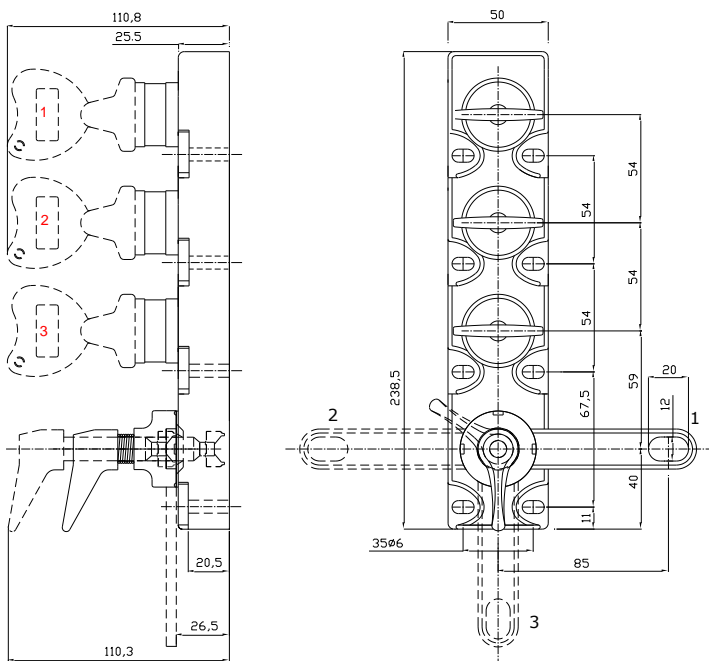
Operating Principle :

T1: Inserting and rotating the 3 operation keys unlocks the latch.

Keys remain trapped as long as door stays open.

T2: Inserting and rotating 2 operation keys releases the safety key.

Removal of the safety key from the lock unlocks the latch to open access.



Ref: ACS3E-T2-CE-C0.2



Ref: ACS-3E-T2-MCUOF-CE-C0.2

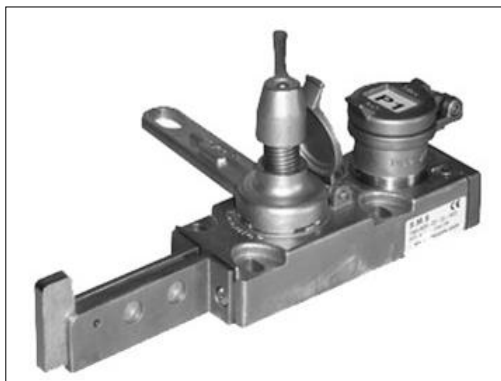
References examples:

ACS-3E-T1-CE-C0.2: 3 operating keys, lock dustcovers, 20 cm chain latch

ACS-3E-T2: 2 operating keys, 1 safety key, 85 mm latch

ACS-3E-T2-CE-MCUOF: 2 operating keys, 1 safety key, lock dustcovers, 85 mm latch with electric contacts 1NO+1NC

ACS-3E-T2-C0.2: 2 operating keys, 1 safety key, 20 cm chain latch



Ref: ACS-HC-CE-CEL

Characteristics:

Access control Interlock 1 to 3 keys for any kind of door.

85 mm centre-distance 3 handing positions locking latch.

- 2 padlocks ref: **HC** - 8 padlocks ref: **HC8**
- 1 key ref: **ACS**, 2 Keys ref: **2E**, 3 keys ref: **3E**
- 2 Operation Keys ref: **T1**
- 1 Operation Key and 1 Safety Key (to avoid locking in) ref: **T2**
- Latch handle with incorporated ingress protection

Materials: Stainless Steel 316

Options:

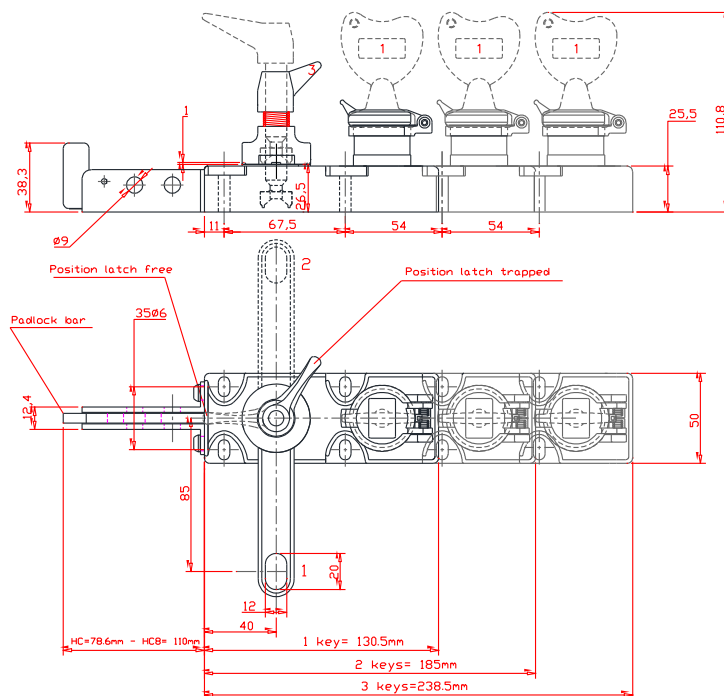
- Lock dustcover ref: **CE**
- Latch hole dustcover ref: **CEL**
- 20 cm chain latch ref: **C0.2**

Electrical contacts:

- 1NO+1NC ref: **MCUOF**
- 2NO (open door) ref: **MCU20**
- 2NC (open door) ref: **MCU2F**
- Enhanced protection (concrete) ref: **PR**

Operating Principle:

Key free = access door closed and locked. Inserting and turning the key frees the latch, push the padlock bar and insert padlock in holes. The door is consigned open and the key remains trapped as long as the door is open and padlocks are present.



References examples:

ACS-HC: Access lock, 2 padlocks capacity, with 85 mm latch

ACS2E-T1-HC8-CE: 2 operation Keys access lock, 8 padlocks capacity, lock dustcover, 85mm latch

Safety gate switch With latch



Ref: ALMCU-20

Characteristics:

Access safety switch locking for any kind of door.
Most suitable for doors with risk of misalignment and/or harsh operating conditions.
Easy installation, no safety switch tuning required.

Materials: Stainless Steel 316

Electrical features:

AC-15:400V/4A- Positive breaking safety contacts
2NO contacts- free latch
Ingress Protection: IP67

Options:

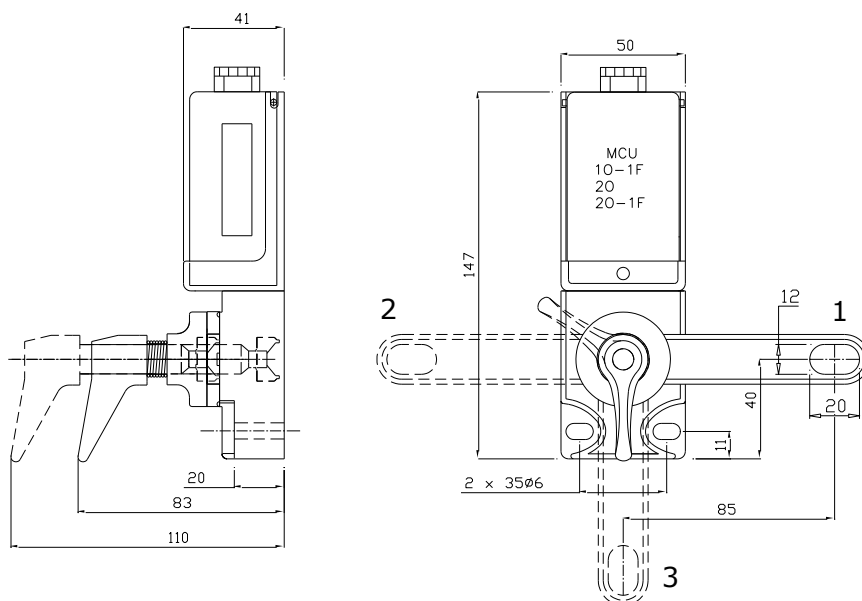
- 2NC+1NO contacts(locked latch) **ref: 102F**
- 1NO+1NC contacts (free latch) **ref: OF**
- 2NO contacts (free latch) **ref: 2NO**
- ATEX 1NO+1NC contacts with 3 meters of cable **ref: ATEXOF3**
- 20 cm chain latch **ref: C0.2**

Operating Principle:

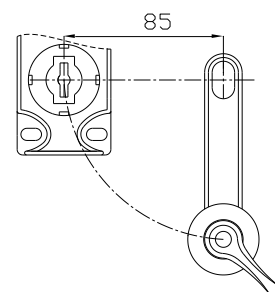
With free latch (open access) 2NO contacts are open.

Trapped latch (denied access) 2NO contacts are closed for machine start (with safety switch contacts 2NC+1NO latch trapped when 2 closed /1 open).

The latch is very reliable and requires conscious action for opening and closing



Ref: ALMCU-20-C0.2



References examples:

ALMCU-2NO: Switch with 2NO contacts free latch

ALMCU-2NC+1NO: Switch with 2 contacts closed and 1 contact open- trapped latch

ALMCU-1NO+1NC: Switch with 1NO+1NC contact -free latch

ALMCU-2NO-C0.2: Switch with 2NO contact- free latch, 20cm chain latch



Ref: ACST0-MCU20-CE

Characteristics:

Safety key release initiates machine stop and enables safe door opening.
Prevents machine operation with open door,
Prevents personnel being accidentally locked inside a guarded area.

Materials: Stainless Steel 316

Options:

- Key dustcover ref: CE
- 20 cm chain latch ref: C0.2

Electrical contacts:

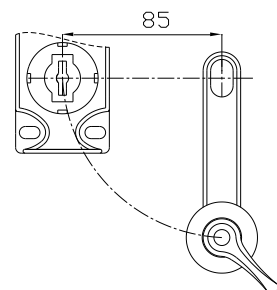
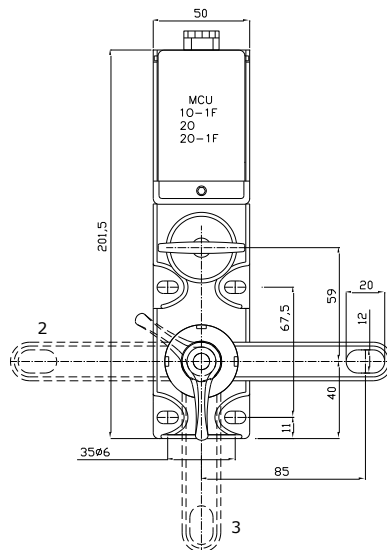
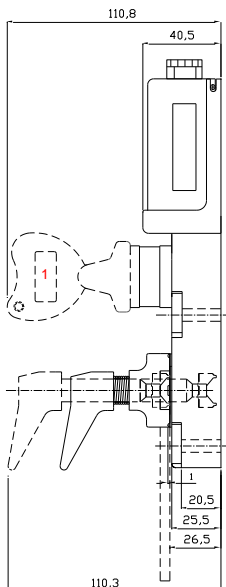
- 1NO+2NC ref: MCU102F
- 1NO+1NC ref: MCUOF
- 2NO (open door) ref: MCU20
- 2NC (closed door) ref: MCU2F
- ATEX3 contacts ref: ATEX3 (see for detail ref: MCU)
- 1 Operation Key and 1 Safety Key ref: T2
- 2 Safety Keys ref: 2E

Operating Principle:

Removal of the Safety Key operates the safety switch contacts to safe machine stop mode and enables door opening. Safety key can be taken into the guarded area to prevent accidental restart, and/or initiate safe programming inside the guarded area by operating safety switch interlock ref: EXLT1 MCU



Ref: ACST0-MCU20-C0.2-CE



References examples:

- ACST0-CE-C0.2: with lock dustcover and 20 cm chain latch
- ACST0-MCU20-CE: with lock dustcover, 85 mm latch and 2NO contacts
- ACST0-CE: Unit without switch, with lock dustcover and 85 mm latch
- ACST0-C0.2: Unit without switch, and 20 cm chain latch

For combined safe programming inside the guarded area, see safety switch interlock ref: EXLT1 MCU



Ref: ASCL-2020-24V-C0.2

Characteristics:

- Solenoid locking. 2 solenoid and 2 latch position control contacts (positive break), 100% Solenoid Duty Cycle, with LEDs, and override key, 85 mm centre-distance latch.
- Designed for heavy duty interlock application.
- With coded locking latch option ref: **LM**

Materials: Stainless Steel 316

Electrical features:

- Solenoid Voltage: 24 V DC/AC 13W
- Contacts: 2NO+2NC AC21 16A, AC23 4kW/230V, 7.5/400V, AC3 3kW/ 230V, 4 kW/ 400V

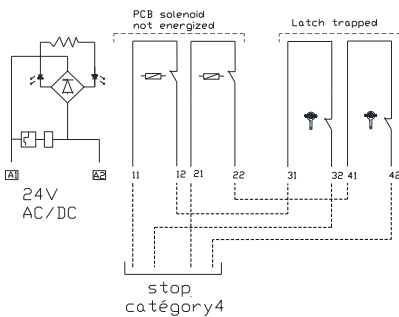
Options:

- 230 Volts power supply ref: **230V**
- 20 cm chain latch ref: **C0.2**
- Latch lock dustcover ref: **CEL**
- Key Lock dustcover ref: **CE**
- Padlocking device, 2 x 8,2 mm holes ref: **HC**
- Padlocking device, 8 x 8,2 mm holes ref: **HC8**

Operating Principle:

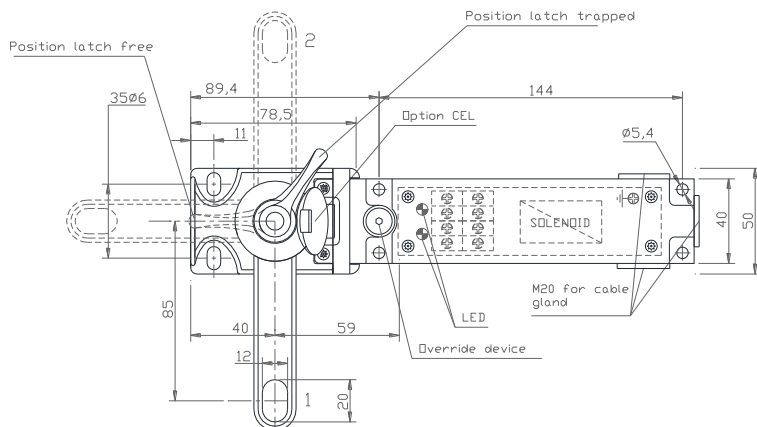
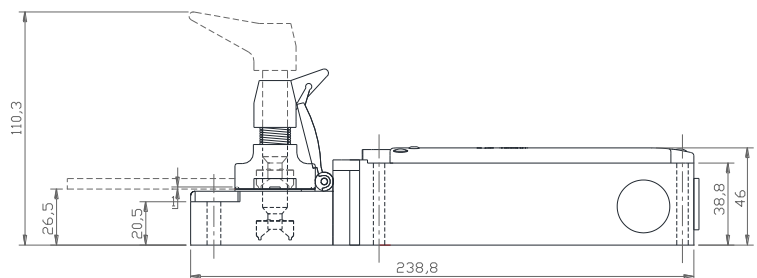
- Solenoid energization releases the locking latch and enables access door opening.
- Provides suitability for use in SIL 3 EN/IEC 62061, Category 4 and PlE EN/ISO 13849-1 applications.
- Protection: IP67 according to EN 60529

Wiring scheme



TECHNICAL SPECIFICATION

Power supply: 24V AC/DC -10%/+25%-13 W
 Working factor:100%
 Contacts solenoid 2NC 6A 240V
 Contacts latch: 2x2NCAC15-10A 240V
 LED: 2 x green
 Section cable: mini 1 x 0.34² max 2 x 1.5²
 Cable gland entry: 3 positions M20
 Montage: front of board
 Fitting: M5 x 6
 Temperature: Min-25°C. Max 60°C.
 Protection: IP67 according to EN 60529



References examples:

- ASCL-2020-24V-CE:** lock with solenoid controlled latch 24 V 2NC+2NC contacts with key dustcover
- ASCL-2020-24V-LM:** lock with solenoid controlled latch 24 V 2NC+2NC contacts and coded locking latch
- ASCL-2020-24V-E1-CE:** lock with solenoid controlled latch 24 V 2NC+2NC contacts, safety key and dustcovers.
- ASCL- 2020-24V-C0.2:** lock with solenoid contr. latch 24 V 2NC+2NC contacts and 20 cm chain latch



Ref: ASCL1E-2020-24V-C0.2 -CE

Characteristics:

- Solenoid locking. 2 solenoid and 2 latch position control contacts (positive break), 100% Solenoid Duty Cycle, with LED, and override key, 85 mm centre-distance latch.
- Designed for heavy duty interlock application.
- With coded locking latch option ref: **LM**
- Available with up to 3 Safety Keys ref: **2E, 3E**

Materials: Stainless Steel 316

Electrical features:

- Solenoid Voltage: 24 V DC/AC 13W
- Contacts: 2NC+2NC 6A /240V,

Options:

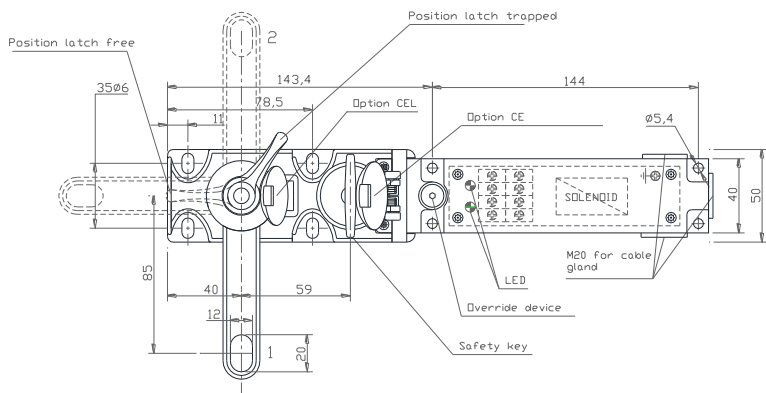
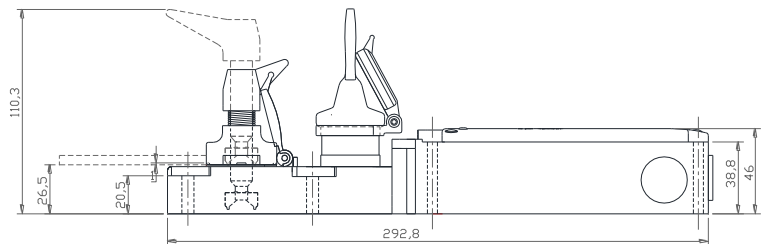
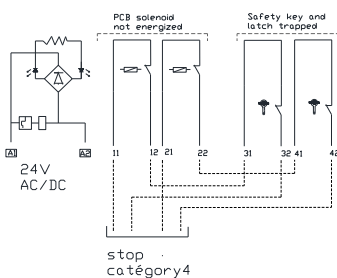
- 230 Volts power supply ref: **230V**
- 20 cm chain latch ref: **C0.2**
- Latch lock dustcover ref: **CEL**
- key Lock dustcover ref: **CE**
- Padlocking device, 2 x8,2 mm holes ref: **HC**
- Padlocking device, 8 x8,2 mm holes ref: **HC8**

Operating Principle:

- Solenoid energization releases the safety key and enables to release the latch and access door opening.
- Coded locking latch ref: **LM**

Provides suitability for use in SIL 3 EN/IEC 62061 Category 4 and Ple EN/ISO 13849-1 applications.
Protection: IP67 according to EN 60529

Wiring scheme



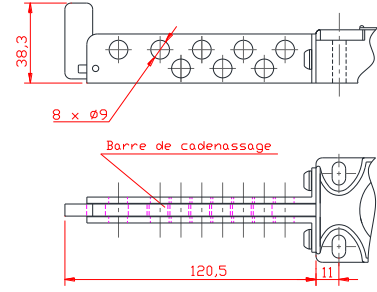
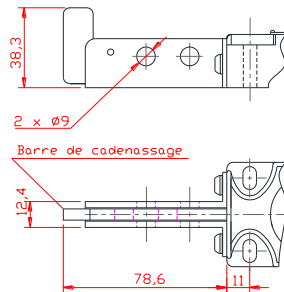
TECHNICAL SPECIFICATION

Power supply: 24V AC/DC -10%/+25%-13 W
Working factor: 100%
Contacts solenoid 2NC 6A 240V
Contacts latch: 2x2NCAC15-10A 240V
LED: 2 x green
Section cable: mini 1 x 0.34² max 2 x 1.5²
Cable gland entry: 3 positions M20
Montage: front of board
Fitting: M5 x 6
Température: Min-25°C. Max 60°C.
Protection: IP67 according to EN 60529

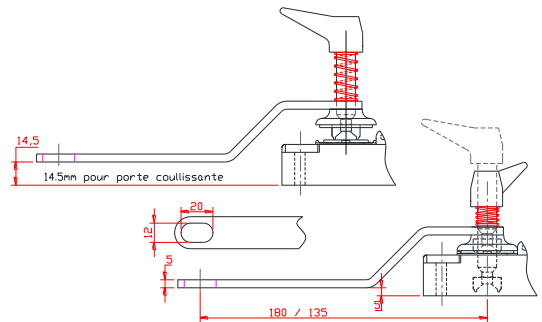
References examples:

- ASCL1E-2020-24V-CE:** lock with solenoid controlled safety key & latch 24 V 2NC+2NC contacts with key dustcover
- ASCL1E-2020-24V-LM:** lock with solenoid controlled safety key & latch 24V 2NO+2NC contacts and coded locking latch
- ASCL1E- 2020-24V-CO.2:** lock with solenoid contr. latch 24 V 2NO+2NC contacts and 20 cm chain latch

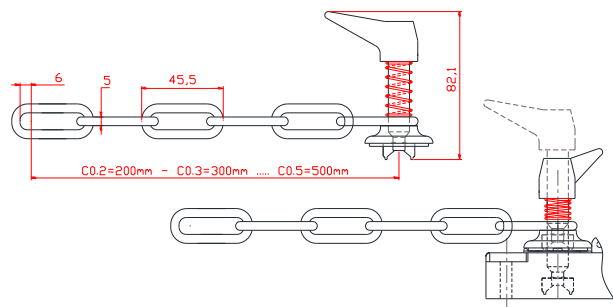
Padlock device for 2 & 8 Padlocks **ref: HC / HC8**



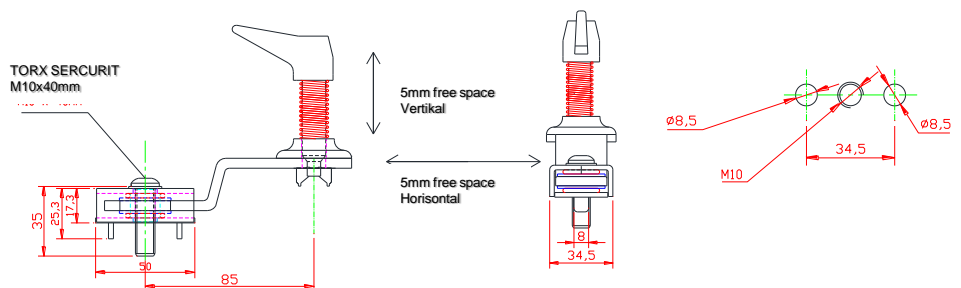
Latch 135 mm bended-for flush mounting **ref: LQ135**
Latch 180 mm bended-for flush mounting **ref: LQ180**



Chain Latch 20cm/30cm... **ref: C0.2 / C0.3**
Shackles 5 mm – welded- full stainless steel



Anti Vibration Latch , 85mm centre distance **ref: ATV**





Ref: EXLT1-MCU20-CE

Characteristics:

- Keyoperated failsafe assembled overtravel limit switch.
- Suitable for access request-, Programming- and Machine stop control in combination with ASCL and ACS units.
- Front of board mounting.
- Available up to 6 locks. Multiple lock ref: **2E, 3E, 4E, 5E, 6E**

Materials: Stainless Steel 316
Ingress Protection: IP67

Electrical features:

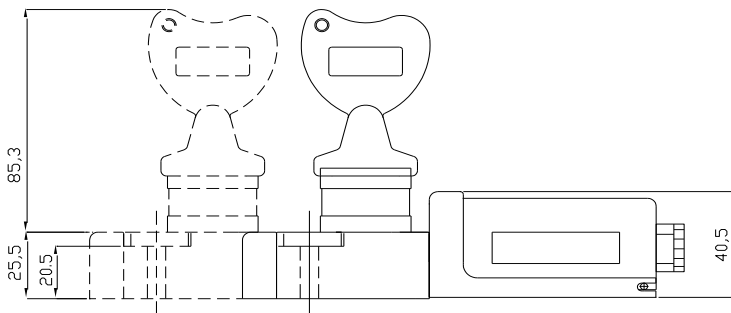
- AC15: 4A/400V- Positive breaking safety contacts
- 2NC+1NO ref: **MCU2FO**
- 1NO-1NC ref: **MCUOF**
- 2NO (free key) ref: **MCU2O**
- 2NC (free key) ref: **MCU2F**

Options:

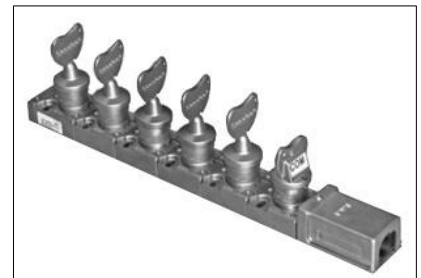
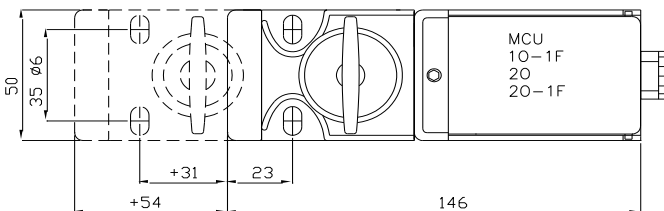
- Key dustcover ref: **CE**
- BOB (Panel Mounting) ref: **INV** (see for detail ref: MCU)
- ATEX3 contacts ref: **ATEX3** (see for detail ref: MCU)

Operating principle:

Modular lock with safety switch, designed as FOB (wall) mounted rail, release of one or more keys operates the switch and vice versa.



Ref: EXLT1-3E-MCU20



Ref: EXLT1-6E-MCU20-COM

References examples:

EXLT1-MCUOF: Lock 1 key with contacts 1NO+1NC

EXLT1-2E-MCUOF: Lock 2 keys with contacts 1NO+1NC

EXLT1- 3E-MCU20-CE: Lock 3 keys with contacts 2NO free keys, lock dustcovers

EXLT1-MCU2OATEX3: Lock 1 key with contacts 2NO free key, explosion proof contacts with 3 meters of cable.



Ref: MCUOF

Characteristics:

- Electrical safety switch module, fits without modification to any of our products like BLT Boltlock, ACS Access locks, or EXL Key exchangers.
- Fitted with protection cover and sealed with a safety screw to prevent unauthorized switch access. Suitable for safety applications.

Materials: Stainless Steel 316

Electrical features:

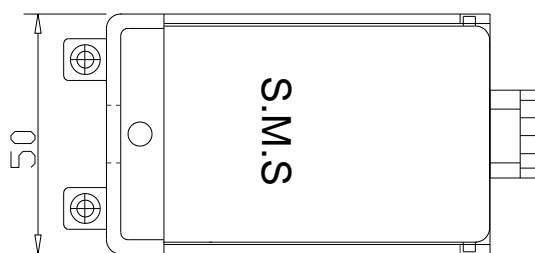
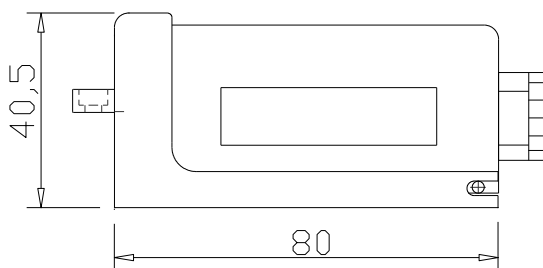
- AC-15:400V/4A- Positive breaking safety contacts
- 2NC+1NO ref: **MCU2FO**
- 2 NO contacts ref: **MCU20**
- 2NC contact ref: **MCU2F**
- 1NO +1NC contacts ref: **MCUOF**
- Ingress protection: IP 67 ref: **IP67**

Options:

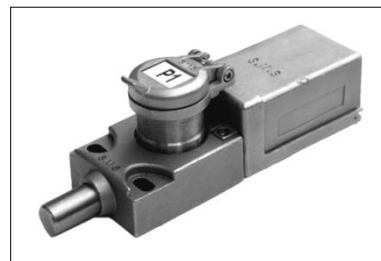
- Back of Board version (Panel Mounting) ref: **INV**
- ATEX 1NO+1NC contact with 3 meters of cable (for other type please contact us) ref: **ATEXOF3**

Operating principle:

The module MCU can be fitted without any technical modification of the host lock. It monitors the key or latch status and/or provides for safety circuit control functionality.



contacts sécurité
positive
1NO-NF
2NF
2NO



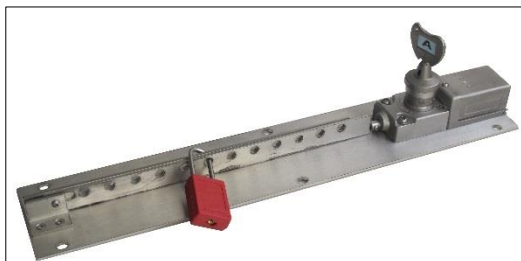
Ref: BLT15-CE-MCUOF



Ref: BLT15-MCUOF-INV



Ref: BLT10-2E-MCU20



Ref: BHC-M-2E-12C

Characteristics:

- Designed for multi padlockable key storage, to prevent unauthorized restart of equipment
- Capacity: 5, 12, 20 padlocks.
- Padlock holes for 8 mm max. diam shackle
 For 5 padlocks ref: **BHC5C**
 For 12 padlocks ref: **BHC12C**
 For 20 padlocks ref: **BHC20C**

Materials: Stainless Steel 316

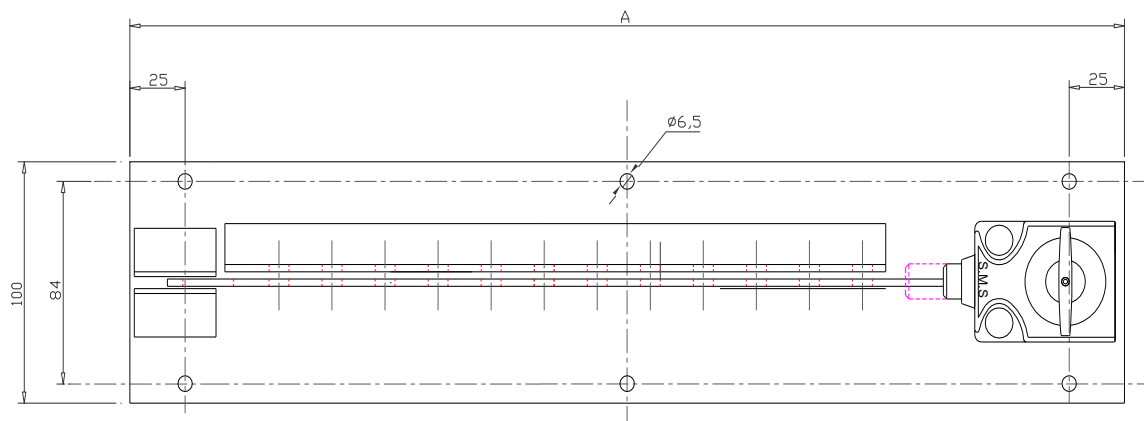
Options:

- 2 keys ref: **2E**
- 3 keys ref: **3E**
- Lock dustcover ref: **CE**
- Switch 2NO free key ref: **MCU20**
- Switch 1NO+1NC ref: **MCU-OF**

Can be combined with key exchange panel ref. TCL

Operating principle:

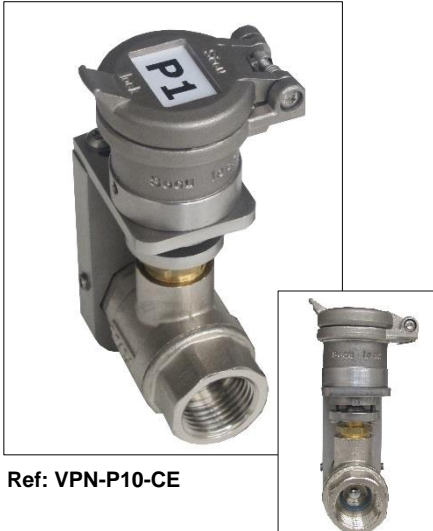
The key is trapped in the lock by any padlock which blocks key release for access lock operation (f.i. access lock with safety key ACS2E-T2) as well as system restart.



référence	A
BHC 5	300
BHC 12	450
BHC 20	600

References examples:

- BHC5C:** 1 key lock with 5 padlocks rail
- BHC12C:** 1 key lock 12 padlocks rail
- BHC12C-2E-CE:** 2 keys lock with 12 padlocks rail, lock dustcovers
- BHC20C:** 1 key lock with 20 padlocks rail
- BHC12C-2E:** 2 keys lock with 12 padlocks rail
- BHC12C-2E-MCUOF:** 2 keys lock with 12 padlocks rail and 1NO+1NC contacts



Ref: VPN-P10-CE

Characteristics:

- Interlock for pneumatic or hydraulic valves, with key free in locked closed position.
- Pneumatic valve DN10 to DN 25 with female connexion
Direct key operated
- Hydraulic valve DN15 to DN50 with female connexion
Lever operated and interlocked with boltlock

Materials:

- Lock body : Stainless Steel 316
- Pneumatic valve: brass, chrome finished
- Hydraulic valve: steel chrome finished

Options:

- Lock dustcover ref: **CE**
- 3 way valve (on request)
- Specific options for hydraulic valve**
- Switch NO+NC ref: **MCUOF**
- Locked 2 positions with 2 locks ref: **LOC**
- Lock closed 2 keys free ref: **2E**

Reference	Valve type & Diameter	Pressure (bars)
VPN10	Pneumatic DN10	30
VPN15	Pneumatic DN15	30
VPN20	Pneumatic DN20	30
VPN25	Pneumatic PN25	30
VPH15	Hydraulic DN15	400
VPH25	Hydraulic DN25	400
VPH40	Hydraulic DN40	400



Ref: VPH25-CE

References examples:

- VPH-P10-CE:** pneumatic valve DN10 locked closed-key free with dustcover
VPH-H25-CE: hydraulic valve DN25 locked closed-key free with dustcover
VPH2E-H15-CE: hydraulic valve DN15 locked closed 2 keys free with dustcover
VPH-LOC-H40-MCUOF-CE: hydraulic valve DN40 locked open and locked closed with contact NO+NC



Ref: 90L-LOC

Characteristics:

- Lock 90L (for ¼ turn valves) such as ball or butterfly valve.
- Includes valve fitting kit, can be mounted without drilling or valve modification.
- Quick to install or to dismantle
- Locking force 500 daN
- 650°C fire resistance
- Keys and dustcover with incorporated lock ingress protection
- SécuMS patented easy lock coding and marking

Materials: Stainless Steel 316

Options:

- Integrated position monitoring switch
- ATEX 1NC position contact when valve open **ref: BFO**
- ATEX 1NC position contact when valve closed **ref: BFC**
- Key cabinets/Key management systems

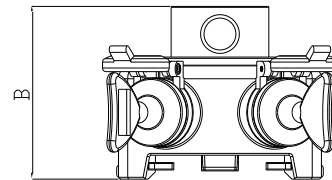
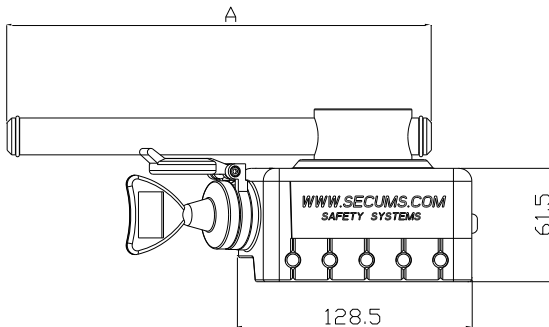
For more details and the complete range of locks for valves, please refer to our SECULOK IVL catalogue

Operating principle:

- **90L-LO:** Single locking, key free when the valve is locked open (right side key).
- **90L-LC:** Single locking, key free when the valve is locked closed (left side key). en the valve is locked closed (left key), other key free when the valve is locked open (right key). Only one key can be free at the time.
- **90L-LOC:** Double locking, one key free



Ref: 90L-LOC-BFO+BFC



DIMENSIONS

A	B
180	95
280	
380	
500	

Design of adaptation kit tailored to the to be interlocked valve type and size

References examples:

- 90L-LOC:** Double lock with lever, locking the valve in open and/or closed position
- 90L-LO:** Single Lock with lever, locking the valve in open position
- 90L-LC:** Single Lock with lever, locking the valve in closed position



Ref: MTL-LOC

Characteristics:

- Lock MTL (for handwheel operated valves) such as gate, globe or gearbox operated valves .
- Includes valve fitting kit, and can be mounted without drilling or valve modification.
- Quick to install or to dismantle
- Locking force 500 daN
- 650°C fire resistance
- Keys and dustcovers with incorporated lock ingress protection

Materials: Stainless Steel 316

Options:

- Integrated position monitoring switch
- ATEX 1NC position contact when valve open **ref: BFO**
- ATEX 1NC position contact when valve closed **ref: BFC**
- Key cabinets/Key managementsystems: see **ref TCL**

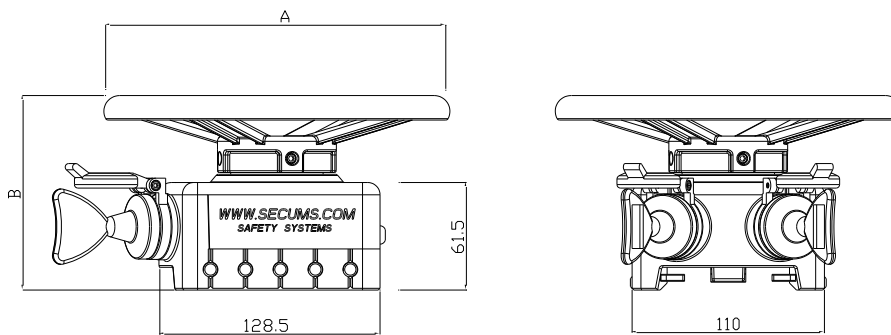
For more detail and the complete range of locks for valves, please refer to our SECULOK IVL catalogue

Operating Principle:

- **MTL-LO**: Single locking, key free when the valve is locked open (right side key).
- **MTL-LC**: Single locking, key free when the valve is locked closed (left side key).
- **MTL-LOC**: Double locking, one key free when the valve is locked closed (left key), other key free when the valve is locked open (right key). Only one key can be free at the time.



Ref: MTL-LOC



DIMENSIONS	
A	B
Ø 180	95
Ø 280	115
Ø 380	135
Ø 500	155

References examples:

- MTL-LOC**: Double lock with handwheel, locking the valve in open and/or closed position
- MTL-LO**: Single Lock with handwheel, locking the valve in open position
- MTL-LC**: Single Lock with handwheel, locking the valve in closed position



Ref: CVL-483

Characteristics:

Thermoplastic body XENOY, dielectric, light, robust and chemical resistant.

Unique rotary design for quick installation.

- 6 sizes, for up to 35,2cm diameter handwheels
- 3 padlocks holes 8/9,5 mm
- Removable center cap for rising stem valves
- Temperature -46 °C to 177 °C
- Quick to install or to dismantle

Options:

- Padlocks
- Hasp with 6 padlocks **ref: 416**

Operating Principle:

Place the valve in proper position, place the to the valve handwheel size adapted CVL cover, and lock with safety padlocks at choice.



Ref: CVL-482

Handwheel	↷ 2.7cm up to 8.1cm	480
Handwheel	↷ 5.4 cm up to 13.5cm	481
Handwheel	↷ 10.8cm up to 17.6cm	482
Handwheel	↷ 16.2 cm up to 27cm	483
Handwheel	↷ 21.6 cm up to 35.2cm	484
Handwheel	set of each size (5)↷ 5.4 up to 35.2 cm	485

References examples:

CVL-480: Lockout for handwheel valve between 2,7 and 8,1 cm

CVL-483: Lockout for handwheel valve between 16,2 and 27 cm



Distributors

TOTAL LOCKOUT (SAFETY) LTD

Unit 10 Warner Drive, Springwood Industrial Estate
Braintree, Essex, CM7 2YW
UNITED KINGDOM
Tel: +44 (0)1376 325506
Fax: +44 (0)1376 347484
www.totallockout.com
sales@totallockout.com

HEXAGON DISTRIBUTORS SDN BHD

Lot 1903A, Jalan KPB 7
Kawasan Perindustrian Kg. Baru Balakong
43300 Seri Kembangan
SELANGOR, MALAYSIA
Tel: +60-3-8961 8066
Fax: +60-3-8962 1011
www.valvetec.com
skcho@mjvttec.co.krc

MJV TEC- Myoung Jin Valvetec CO., Ltd

6F, Sungwoo Building
15-12 Yoido – Dong
Youngdeungpo - Gu
SEOUL, KOREA
Tel: +82 8 785 2327
Fax: +82 8 785 2329
www.valvetec.com
skcho@mjvttec.co.krc

AL-ZAHM INT'L GROUP TRADG.

Oil field & Industrial services,
P.O. Box: 26212, Safat -13123, Kuwait
ambialex@hotmail.com

Head office

Sécurité Machines Systèmes

SECUMS Interlocks SARL

9, rue Eugène Sue
93360 Neuilly Plaisance
FRANCE
Tel : + 33 1 43 08 65 31
Fax: + 33 1 43 08 97 20
www.secums-interlocks.com
info@secums.com

Sales Office Europe- North

Secums Interlocks BV

Pascalweg 25
3225 LE Hellevoetsluis
NETHERLANDS
Tel : 31 (0) 181 809970
Fax: 31 (0) 181 809975
www.secums-interlocks.com
info@secums.com